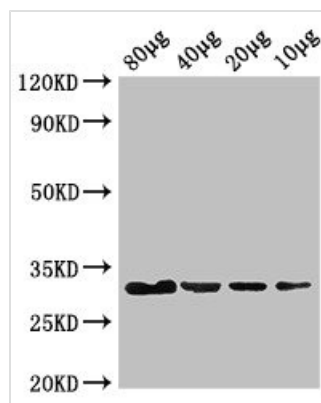




# eutC Antibody

|                            |  |
|----------------------------|--|
| <b>Product Code</b>        | CSB-PA18239A0Rb  |
| <b>Storage</b>             | Upon receipt, store at -20°C or -80°C. Avoid repeated freeze.  |
| <b>Uniprot No.</b>         | P19636   |
| <b>Immunogen</b>           | Recombinant Escherichia coli Ethanolamine ammonia-lyase light chain protein (1-295AA)                |
| <b>Raised In</b>           | Rabbit   |
| <b>Species Reactivity</b>  | Escherichia coli   |
| <b>Tested Applications</b> | ELISA, WB; Recommended dilution: WB:1:500-1:5000   |
| <b>Form</b>                | Liquid   |
| <b>Conjugate</b>           | Non-conjugated   |
| <b>Storage Buffer</b>      | Preservative: 0.03% Proclin 300<br>Constituents: 50% Glycerol, 0.01M PBS, PH 7.4                     |
| <b>Purification Method</b> | >95%, Protein G purified   |
| <b>Isotype</b>             | IgG  |
| <b>Clonality</b>           | Polyclonal   |
| <b>Alias</b>               | Ethanolamine ammonia-lyase light chain (EC 4.3.1.7) (Ethanolamine ammonia-lyase small subunit), eutC |
| <b>Immunogen Species</b>   | Escherichia coli   |
| <b>Research Area</b>       | Others   |
| <b>Target Names</b>        | eutC   |

## Image



### Western Blot

Positive WB detected in: Rosseta bacteria lysate at 80µg, 40µg, 20µg, 10µg

All lanes: eutC antibody at 3µg/ml

### Secondary

Goat polyclonal to rabbit IgG at 1/50000 dilution  
predicted band size: 32 kDa

observed band size: 32 kDa