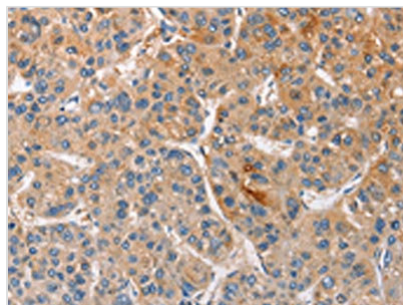




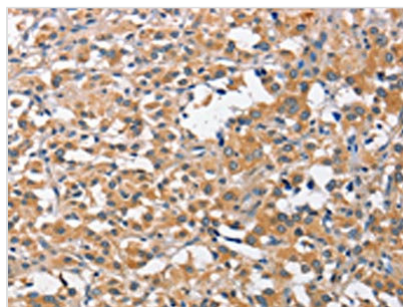
CCL4 Antibody

Product Code	CSB-PA193639
Storage	Upon receipt, store at -20°C or -80°C. Avoid repeated freeze.
Uniprot No.	P13236
Immunogen	Fusion protein of Human CCL4
Raised In	Rabbit
Species Reactivity	Human,Rat
Tested Applications	ELISA,IHC;ELISA:1:1000-1:5000,IHC:1:50-1:200
Form	Liquid
Conjugate	Non-conjugated
Storage Buffer	-20°C, pH7.4 PBS, 0.05% NaN ₃ , 40% Glycerol
Purification Method	Antigen affinity purification
Isotype	IgG
Alias	chemokine (C-C motif) ligand 4
Immunogen Species	Homo sapiens (Human)
Target Names	CCL4

Image



The image on the left is immunohistochemistry of paraffin-embedded Human liver cancer tissue using CSB-PA193639(CCL4 Antibody) at dilution 1/40, on the right is treated with fusion protein. (Original magnification: ×200)



The image on the left is immunohistochemistry of paraffin-embedded Human thyroid cancer tissue using CSB-PA193639(CCL4 Antibody) at dilution 1/40, on the right is treated with fusion protein. (Original magnification: ×200)