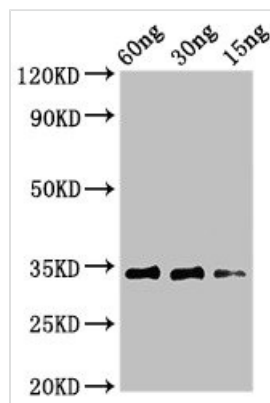




# Major pollen allergen Aln g 1 Antibody

<b>Product Code</b>	CSB-PA19897A0Rb
<b>Storage</b>	Upon receipt, store at -20°C or -80°C. Avoid repeated freeze.
<b>Uniprot No.</b>	P38948
<b>Immunogen</b>	Recombinant Alnus glutinosa Major pollen allergen Aln g 1 protein (2-160AA)
<b>Raised In</b>	Rabbit
<b>Species Reactivity</b>	Alnus glutinosa
<b>Tested Applications</b>	ELISA, WB; Recommended dilution: WB:1:500-1:5000
<b>Form</b>	Liquid
<b>Conjugate</b>	Non-conjugated
<b>Storage Buffer</b>	Preservative: 0.03% Proclin 300 Constituents: 50% Glycerol, 0.01M PBS, pH 7.4
<b>Purification Method</b>	>95%, Protein G purified
<b>Isotype</b>	IgG
<b>Clonality</b>	Polyclonal
<b>Alias</b>	Major pollen allergen Aln g 1 (Allergen Aln g I) (allergen Aln g 1)
<b>Immunogen Species</b>	Alnus glutinosa
<b>Research Area</b>	Others

## Image



### Western Blot

Positive WB detected in Recombinant protein  
All lanes: Major pollen allergen Aln g 1 antibody at 3μg/ml  
Secondary  
Goat polyclonal to rabbit IgG at 1/50000 dilution  
predicted band size: 34 kDa  
observed band size: 34 kDa