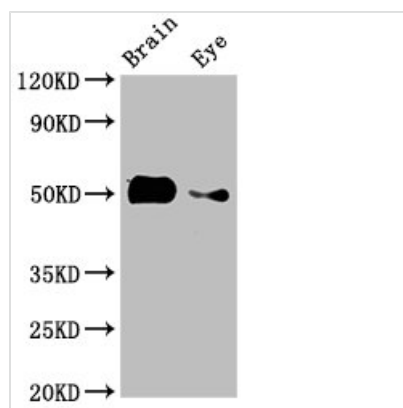




tuba8l2 Antibody

Product Code	CSB-PA20829A0Rb
Storage	Upon receipt, store at -20°C or -80°C. Avoid repeated freeze.
Uniprot No.	Q6PC95
Immunogen	Recombinant Zebrafish Tubulin alpha chain protein (1-449AA)
Raised In	Rabbit
Species Reactivity	Zebrafish
Tested Applications	ELISA, WB; Recommended dilution: WB:1:1000-1:5000
Form	Liquid
Conjugate	Non-conjugated
Storage Buffer	Preservative: 0.03% Proclin 300 Constituents: 50% Glycerol, 0.01M PBS, pH 7.4
Purification Method	>95%, Protein G purified
Isotype	IgG
Clonality	Polyclonal
Alias	Tubulin alpha chain, tuba8l2
Immunogen Species	Zebrafish
Research Area	Others
Target Names	tuba8l2

Image



Western Blot

Positive WB detected in: Zebrafish brain tissue, Zebrafish eye tissue

All lanes: tuba8l2 antibody at 3µg/ml

Secondary

Goat polyclonal to rabbit IgG at 1/50000 dilution

Predicted band size: 51 kDa

Observed band size: 51 kDa