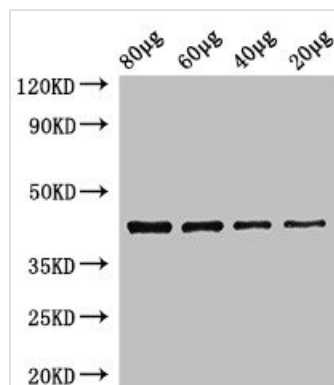




egfra Antibody

Product Code	CSB-PA20899A0Rb
Storage	Upon receipt, store at -20°C or -80°C. Avoid repeated freeze.
Uniprot No.	F1RA48
Immunogen	Recombinant Zebrafish Epidermal growth factor receptor protein (21-389AA)
Raised In	Rabbit
Species Reactivity	Zebrafish
Tested Applications	ELISA, WB; Recommended dilution: WB:1:500-1:5000
Form	Liquid
Conjugate	Non-conjugated
Storage Buffer	Preservative: 0.03% Proclin 300 Constituents: 50% Glycerol, 0.01M PBS, pH 7.4
Purification Method	>95%, Protein G purified
Isotype	IgG
Clonality	Polyclonal
Product Type	Polyclonal Antibody
Immunogen Species	Danio rerio (Zebrafish) (Brachydanio rerio)
Research Area	Others

Image



Western Blot

Positive WB detected in: adult Zebrafish tissue

80µg, 60µg, 40µg, 20µg

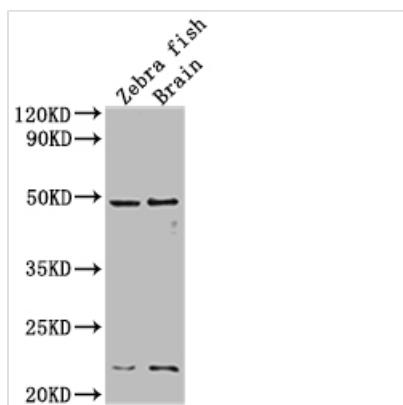
All lanes: egfra antibody at 3.5µg/ml

Secondary

Goat polyclonal to rabbit IgG at 1/50000 dilution

Predicted band size: 43 kDa

Observed band size: 43 kDa



Western Blot

Positive WB detected in: adult Zebra fish, adult Zebra fish brain tissue

All lanes: egfra antibody at 1:2000

Secondary

Goat polyclonal to rabbit IgG at 1/50000 dilution

Predicted band size: 43 kDa

Observed band size: 43 kDa