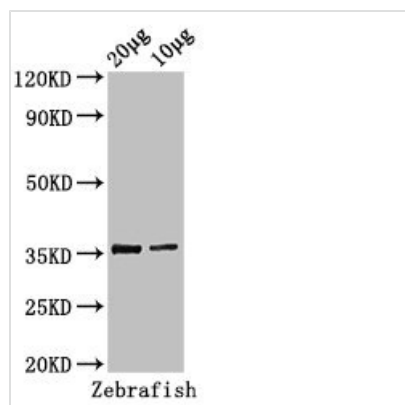




# tal1 Antibody

<b>Product Code</b>	CSB-PA20969A0Rb
<b>Storage</b>	Upon receipt, store at -20°C or -80°C. Avoid repeated freeze.
<b>Uniprot No.</b>	O93507
<b>Immunogen</b>	Recombinant Zebrafish T-cell acute lymphocytic leukemia protein 1 homolog protein (1-324AA)
<b>Raised In</b>	Rabbit
<b>Species Reactivity</b>	Zebrafish
<b>Tested Applications</b>	ELISA, WB; Recommended dilution: WB:1:500-1:5000
<b>Form</b>	Liquid
<b>Conjugate</b>	Non-conjugated
<b>Storage Buffer</b>	Preservative: 0.03% Proclin 300 Constituents: 50% Glycerol, 0.01M PBS, pH 7.4
<b>Purification Method</b>	>95%, Protein G purified
<b>Isotype</b>	IgG
<b>Clonality</b>	Polyclonal
<b>Alias</b>	T-cell acute lymphocytic leukemia protein 1 homolog (TAL-1) (Stem cell protein) (zSCL), tal1, scl tal-1
<b>Immunogen Species</b>	Zebrafish
<b>Research Area</b>	Others
<b>Target Names</b>	tal1

## Image



### Western Blot

Positive WB detected in: Zebrafish tissue 20µg,

10µg

All lanes: tal1 antibody at 3µg/ml

Secondary

Goat polyclonal to rabbit IgG at 1/50000 dilution

Predicted band size: 36, 23 kDa

Observed band size: 36 kDa