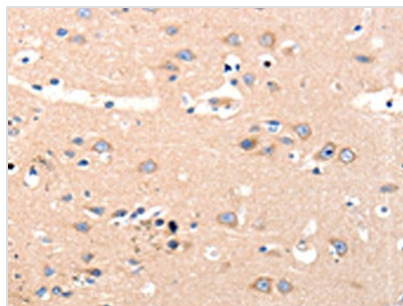




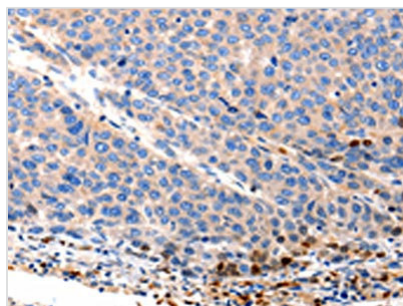
OLR1 Antibody

Product Code	CSB-PA212407
Storage	Upon receipt, store at -20°C or -80°C. Avoid repeated freeze.
Uniprot No.	P78380
Immunogen	Synthetic peptide of Human OLR1
Raised In	Rabbit
Species Reactivity	Human,Mouse
Tested Applications	ELISA,WB,IHC;ELISA:1:1000-1:5000,WB:1:500-1:2000,IHC:1:10-1:50
Form	Liquid
Conjugate	Non-conjugated
Storage Buffer	-20°C, pH7.4 PBS, 0.05% NaN ₃ , 40% Glycerol
Purification Method	Antigen affinity purification
Isotype	IgG
Immunogen Species	Homo sapiens (Human)
Target Names	OLR1

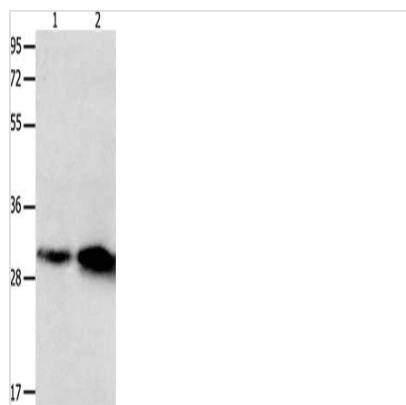
Image



The image on the left is immunohistochemistry of paraffin-embedded Human brain tissue using CSB-PA212407(OLR1 Antibody) at dilution 1/12, on the right is treated with synthetic peptide. (Original magnification: ×200)



The image on the left is immunohistochemistry of paraffin-embedded Human liver cancer tissue using CSB-PA212407(OLR1 Antibody) at dilution 1/12, on the right is treated with synthetic peptide. (Original magnification: ×200)



Gel: 12%SDS-PAGE, Lysate: 40 μ g, Lane 1-2:
 Mouse brain tissue, Mouse lung tissue, Primary
 antibody: CSB-PA212407(OLR1 Antibody) at
 dilution 1/250, Secondary antibody: Goat anti
 rabbit IgG at 1/8000 dilution, Exposure time: 30
 seconds