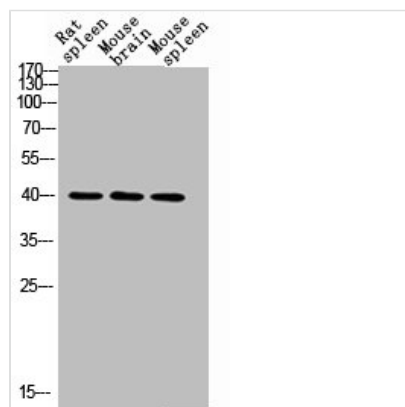




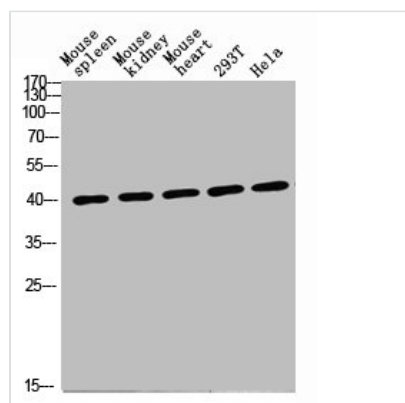
# CD72 Antibody

|                            |   |
|----------------------------|---|
| <b>Product Code</b>        | CSB-PA215043  |
| <b>Storage</b>             | Upon receipt, store at -20°C or -80°C. Avoid repeated freeze.   |
| <b>Uniprot No.</b>         | P21854  |
| <b>Immunogen</b>           | Synthesized peptide derived from the Internal region of Human CD72.   |
| <b>Raised In</b>           | Rabbit  |
| <b>Species Reactivity</b>  | Human   |
| <b>Tested Applications</b> | WB, ELISA; WB:1:500-1:2000, ELISA:1:10000   |
| <b>Form</b>                | Liquid  |
| <b>Conjugate</b>           | Non-conjugated  |
| <b>Storage Buffer</b>      | Liquid in PBS containing 50% glycerol, 0.5% BSA and 0.02% sodium azide.   |
| <b>Purification Method</b> | The antibody was affinity-purified from rabbit antiserum by affinity-chromatography using epitope-specific immunogen. |
| <b>Alias</b>               | CD72; B-cell differentiation antigen CD72; Lyb-2; CD72  |
| <b>Immunogen Species</b>   | Homo sapiens (Human)  |
| <b>Target Names</b>        | CD72  |

## Image



Western blot analysis of RAT-SPLEEN MOUSE-BRAIN MOUSE-SPLEEN lysis using CD72 antibody. Antibody was diluted at 1:2000. Secondary antibody was diluted at 1:20000



Western Blot analysis of various cells using CD72 antibody. Antibody diluted at 1:1000. Secondary antibody was diluted at 1:20000