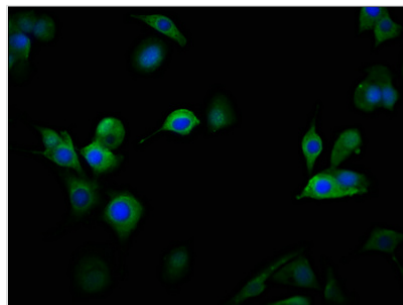




CACNA1D Antibody

Product Code	CSB-PA23409A0Rb
Storage	Upon receipt, store at -20°C or -80°C. Avoid repeated freeze.
Uniprot No.	Q01668
Immunogen	Recombinant Human Voltage-dependent L-type calcium channel subunit alpha-1D protein (1691-1806AA)
Raised In	Rabbit
Species Reactivity	Human
Tested Applications	ELISA, IF; Recommended dilution: IF:1:50-1:200
Form	Liquid
Conjugate	Non-conjugated
Storage Buffer	Preservative: 0.03% Proclin 300 Constituents: 50% Glycerol, 0.01M PBS, pH 7.4
Purification Method	>95%, Protein G purified
Isotype	IgG
Clonality	Polyclonal
Alias	Voltage-dependent L-type calcium channel subunit alpha-1D (Calcium channel, L type, alpha-1 polypeptide, isoform 2) (Voltage-gated calcium channel subunit alpha Cav1.3), CACNA1D, CACH3 CACN4 CACNL1A2 CCHL1A2
Immunogen Species	Homo sapiens (Human)
Research Area	Neuroscience
Target Names	CACNA1D

Image



Immunofluorescence staining of MCF-7 cells with CSB-PA23409A0Rb at 1:100, counter-stained with DAPI. The cells were fixed in 4% formaldehyde, permeabilized using 0.2% Triton X-100 and blocked in 10% normal Goat Serum. The cells were then incubated with the antibody overnight at 4°C. The secondary antibody was Alexa Fluor 488-conjugated AffiniPure Goat Anti-Rabbit IgG(H+L).