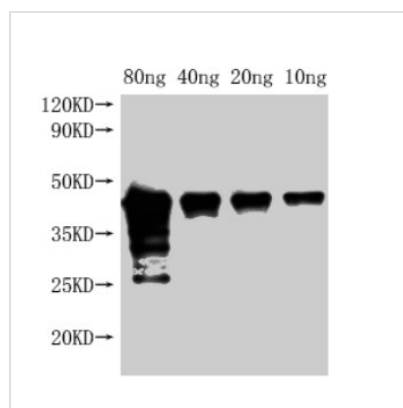




Met Antibody

Product Code	CSB-PA27899A0Rb
Storage	Upon receipt, store at -20°C or -80°C. Avoid repeated freeze.
Uniprot No.	V5KYYX7
Immunogen	Recombinant Locusta migratoria Met protein (1-329AA)
Raised In	Rabbit
Species Reactivity	Locusta migratoria
Tested Applications	ELISA, WB; Recommended dilution: WB:1:1000-1:5000
Form	Liquid
Conjugate	Non-conjugated
Storage Buffer	Preservative: 0.03% Proclin 300 Constituents: 50% Glycerol, 0.01M PBS, pH 7.4
Purification Method	>95%, Protein G purified
Isotype	IgG
Clonality	Polyclonal
Alias	Met protein, Met
Immunogen Species	Locusta migratoria (Migratory locust)
Research Area	Signal Transduction
Target Names	Met

Image



Western Blot

Positive WB detected in Recombinant protein

All lanes: Met antibody at 1:2000

Secondary

Goat polyclonal to rabbit IgG at 1/50000 dilution

Predicted band size: 42 kDa

Observed band size: 45 kDa