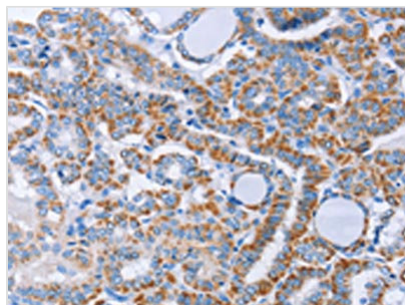




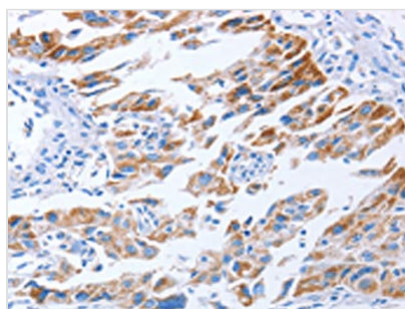
KIF3A Antibody

Product Code	CSB-PA338217
Storage	Upon receipt, store at -20°C or -80°C. Avoid repeated freeze.
Uniprot No.	Q9Y496
Immunogen	Fusion protein of Human KIF3A
Raised In	Rabbit
Species Reactivity	Human,Mouse
Tested Applications	ELISA,WB,IHC;ELISA:1:1000-1:5000,WB:1:500-1:2000,IHC:1:50-1:200
Form	Liquid
Conjugate	Non-conjugated
Storage Buffer	-20°C, pH7.4 PBS, 0.05% NaN ₃ , 40% Glycerol
Purification Method	Antigen affinity purification
Isotype	IgG
Alias	kinesin family member 3A
Immunogen Species	Homo sapiens (Human)
Target Names	KIF3A

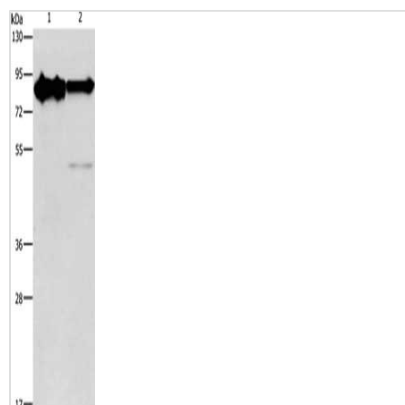
Image



The image on the left is immunohistochemistry of paraffin-embedded Human thyroid cancer tissue using CSB-PA338217(KIF3A Antibody) at dilution 1/40, on the right is treated with fusion protein. (Original magnification: x200)



The image on the left is immunohistochemistry of paraffin-embedded Human lung cancer tissue using CSB-PA338217(KIF3A Antibody) at dilution 1/40, on the right is treated with fusion protein. (Original magnification: x200)



Gel: 8%SDS-PAGE, Lysate: 40 μ g, Lane 1-2:
 Mouse brain tissue, human brain malignant
 glioma tissue, Primary antibody: CSB-
 PA338217(KIF3A Antibody) at dilution 1/750,
 Secondary antibody: Goat anti rabbit IgG at
 1/8000 dilution, Exposure time: 30 seconds