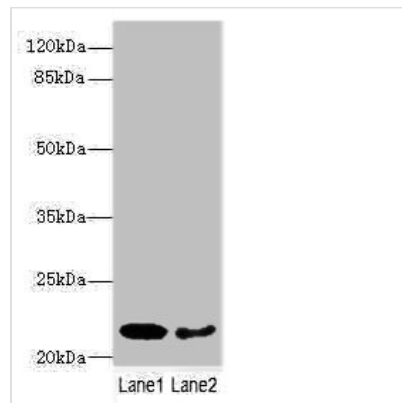




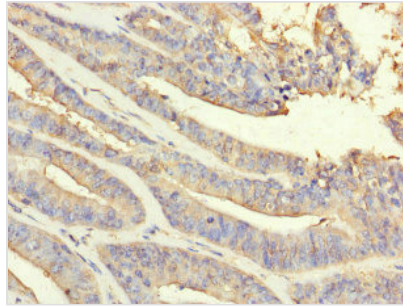
# PRDX2 Antibody

<b>Product Code</b>	CSB-PA339235LA01HU
<b>Storage</b>	Upon receipt, store at -20°C or -80°C. Avoid repeated freeze.
<b>Uniprot No.</b>	P32119
<b>Immunogen</b>	Recombinant Human Peroxiredoxin-2 protein (2-65AA)
<b>Raised In</b>	Rabbit
<b>Species Reactivity</b>	Human, Mouse
<b>Tested Applications</b>	ELISA, WB, IHC, IF; Recommended dilution: WB:1:1000-1:5000, IHC:1:20-1:200, IF:1:50-1:200
<b>Form</b>	Liquid
<b>Conjugate</b>	Non-conjugated
<b>Storage Buffer</b>	Preservative: 0.03% Proclin 300 Constituents: 50% Glycerol, 0.01M PBS, PH 7.4
<b>Purification Method</b>	>95%, Protein G purified
<b>Isotype</b>	IgG
<b>Clonality</b>	Polyclonal
<b>Alias</b>	Peroxiredoxin-2 (EC 1.11.1.15) (Natural killer cell-enhancing factor B) (NKEF-B) (PRP) (Thiol-specific antioxidant protein) (TSA) (Thioredoxin peroxidase 1) (Thioredoxin-dependent peroxide reductase 1), PRDX2, NKEFB TDPX1
<b>Immunogen Species</b>	Homo sapiens (Human)
<b>Research Area</b>	Neuroscience
<b>Target Names</b>	PRDX2

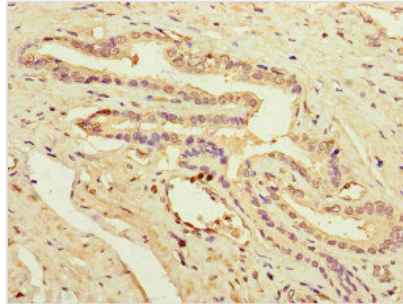
## Image



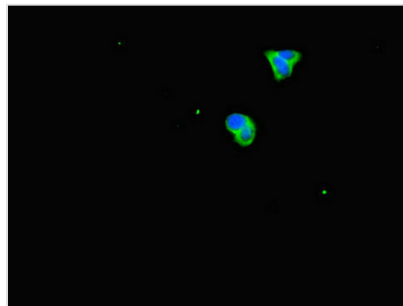
Western blot  
All lanes: PRDX2 antibody at 9μg/ml  
Lane 1: Mouse liver tissue  
Lane 2: Mouse spleen tissue  
Secondary  
Goat polyclonal to rabbit IgG at 1/10000 dilution  
Predicted band size: 22, 16 kDa  
Observed band size: 22 kDa



Immunohistochemistry of paraffin-embedded human endometrial cancer using CSB-PA339235LA01HU at dilution of 1:100



Immunohistochemistry of paraffin-embedded human prostate cancer using CSB-PA339235LA01HU at dilution of 1:100



Immunofluorescent analysis of HepG2 cells using CSB-PA339235LA01HU at dilution of 1:100 and Alexa Fluor 488-conjugated AffiniPure Goat Anti-Rabbit IgG(H+L)