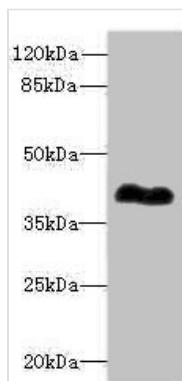




ROM1 Antibody

Product Code	CSB-PA344843ESR2HU
Storage	Upon receipt, store at -20°C or -80°C. Avoid repeated freeze.
Uniprot No.	Q03395
Immunogen	Recombinant Human Rod outer segment membrane protein 1 protein (126-263AA)
Raised In	Rabbit
Species Reactivity	Human, Mouse
Tested Applications	ELISA, WB; Recommended dilution: WB:1:1000-1:5000
Form	Liquid
Conjugate	Non-conjugated
Storage Buffer	PBS with 0.02% sodium azide, 50% glycerol, pH7.3.
Purification Method	Antigen Affinity Purified
Isotype	IgG
Clonality	Polyclonal
Alias	Rod outer segment membrane protein 1 (ROSP1) (Tetraspanin-23) (Tspan-23), ROM1, TSPAN23
Immunogen Species	Homo sapiens (Human)
Research Area	Neuroscience
Target Names	ROM1

Image



Western blot

All lanes: ROM1 antibody at 0.98μg/ml + Mouse ocular tissue

Secondary

Goat polyclonal to rabbit IgG at 1/10000 dilution

Predicted band size: 37 kDa

Observed band size: 37 kDa