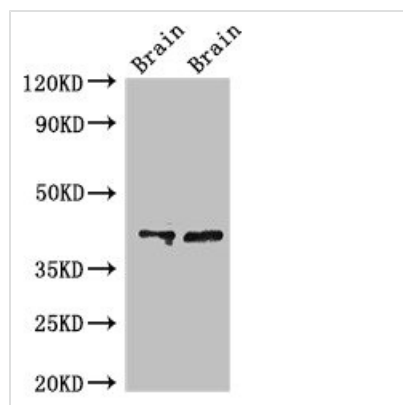




# CAMK1 Antibody

|                            |   |
|----------------------------|---|
| <b>Product Code</b>        | CSB-PA614509LA01HU  |
| <b>Storage</b>             | Upon receipt, store at -20°C or -80°C. Avoid repeated freeze.   |
| <b>Uniprot No.</b>         | Q14012  |
| <b>Immunogen</b>           | Recombinant Human Calcium/calmodulin-dependent protein kinase type 1 protein (166-265AA)  |
| <b>Raised In</b>           | Rabbit  |
| <b>Species Reactivity</b>  | Human, Mouse, Rat   |
| <b>Tested Applications</b> | ELISA, WB, IF; Recommended dilution: WB:1:500-1:5000, IF:1:50-1:200   |
| <b>Form</b>                | Liquid  |
| <b>Conjugate</b>           | Non-conjugated  |
| <b>Storage Buffer</b>      | Preservative: 0.03% Proclin 300<br>Constituents: 50% Glycerol, 0.01M PBS, pH 7.4  |
| <b>Purification Method</b> | >95%, Protein G purified  |
| <b>Isotype</b>             | IgG   |
| <b>Clonality</b>           | Polyclonal  |
| <b>Alias</b>               | Calcium/calmodulin-dependent protein kinase type 1 (EC 2.7.11.17) (CaM kinase I) (CaM-KI) (CaM kinase I alpha) (CaMKI-alpha), CAMK1 |
| <b>Immunogen Species</b>   | Homo sapiens (Human)  |
| <b>Research Area</b>       | Neuroscience  |
| <b>Target Names</b>        | CAMK1   |

## Image



### Western Blot

Positive WB detected in: Rat brain tissue, Mouse brain tissue

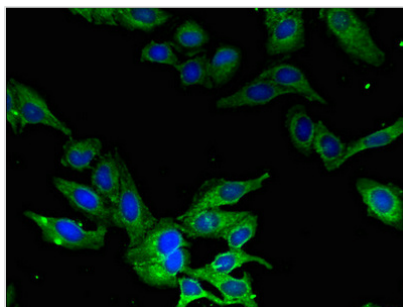
All lanes: CAMK1 antibody at 3μg/ml

### Secondary

Goat polyclonal to rabbit IgG at 1/50000 dilution

Predicted band size: 42 kDa

Observed band size: 42 kDa



Immunofluorescent analysis of HeLa cells using CSB-PA614509LA01HU at dilution of 1:100 and Alexa Fluor 488-conjugated AffiniPure Goat Anti-Rabbit IgG(H+L)