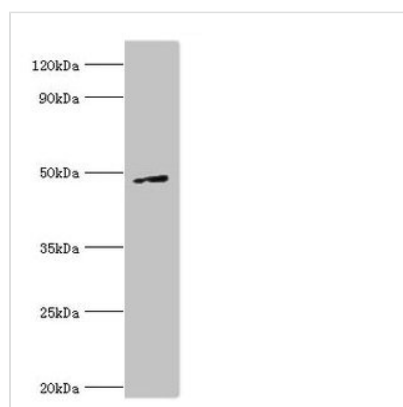




# CTBP1 Antibody

<b>Product Code</b>	CSB-PA618772ESR1HU
<b>Storage</b>	Upon receipt, store at -20°C or -80°C. Avoid repeated freeze.
<b>Uniprot No.</b>	Q13363
<b>Immunogen</b>	Recombinant Human C-terminal-binding protein 1 protein (20-250AA)
<b>Raised In</b>	Rabbit
<b>Species Reactivity</b>	Human
<b>Tested Applications</b>	ELISA, WB; Recommended dilution: WB:1:200-1:1000
<b>Form</b>	Liquid
<b>Conjugate</b>	Non-conjugated
<b>Storage Buffer</b>	PBS with 0.02% sodium azide, 50% glycerol, pH7.3.
<b>Purification Method</b>	Antigen Affinity Purified
<b>Isotype</b>	IgG
<b>Clonality</b>	Polyclonal
<b>Alias</b>	C-terminal-binding protein 1 (CtBP1) (EC 1.1.1.-), CTBP1, CTBP
<b>Immunogen Species</b>	Homo sapiens (Human)
<b>Research Area</b>	Cell Biology
<b>Target Names</b>	CTBP1

## Image



Western blot  
 All lanes: CTBP1 antibody at 6µg/ml + A549 whole cell lysate  
 Secondary  
 Goat polyclonal to rabbit IgG at 1/10000 dilution  
 Predicted band size: 48, 47 kDa  
 Observed band size: 48 kDa