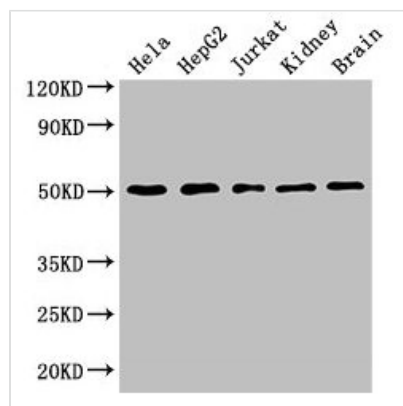




# TUBA3C Antibody

<b>Product Code</b>	CSB-PA621695LA01HU
<b>Storage</b>	Upon receipt, store at -20°C or -80°C. Avoid repeated freeze.
<b>Uniprot No.</b>	Q13748
<b>Immunogen</b>	Recombinant Human Tubulin alpha-3C/D chain protein (161-418AA)
<b>Raised In</b>	Rabbit
<b>Species Reactivity</b>	Human, Mouse
<b>Tested Applications</b>	ELISA, WB, IHC, IF; Recommended dilution: WB:1:1000-1:5000, IHC:1:20-1:200, IF:1:50-1:200
<b>Form</b>	Liquid
<b>Conjugate</b>	Non-conjugated
<b>Storage Buffer</b>	Preservative: 0.03% Proclin 300 Constituents: 50% Glycerol, 0.01M PBS, PH 7.4
<b>Purification Method</b>	>95%, Protein G purified
<b>Isotype</b>	IgG
<b>Clonality</b>	Polyclonal
<b>Alias</b>	Tubulin alpha-3C/D chain (Alpha-tubulin 2) (Alpha-tubulin 3C/D) (Tubulin alpha-2 chain) [Cleaved into: Detyrosinated tubulin alpha-3C/D chain], TUBA3C; TUBA3D, TUBA2;
<b>Immunogen Species</b>	Homo sapiens (Human)
<b>Research Area</b>	Signal Transduction
<b>Target Names</b>	TUBA3C

## Image

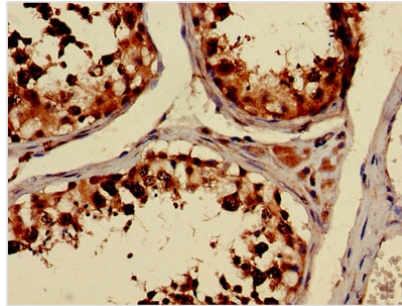


### Western Blot

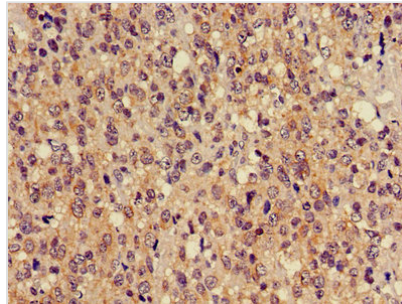
Positive WB detected in: HeLa whole cell lysate, HepG2 whole cell lysate, Jurkat whole cell lysate, Mouse kidney tissue, Mouse brain tissue  
All lanes: TUBA3C antibody at 3µg/ml

### Secondary

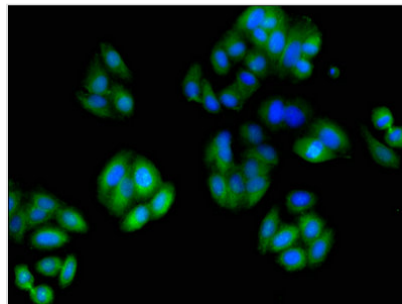
Goat polyclonal to rabbit IgG at 1/50000 dilution  
Predicted band size: 50, 47 kDa  
Observed band size: 50 kDa



Immunohistochemistry of paraffin-embedded human testis tissue using CSB-PA621695LA01HU at dilution of 1:100



Immunohistochemistry of paraffin-embedded human glioma using CSB-PA621695LA01HU at dilution of 1:100



Immunofluorescent analysis of HepG2 cells using CSB-PA621695LA01HU at dilution of 1:100 and Alexa Fluor 488-conjugated AffiniPure Goat Anti-Rabbit IgG(H+L)