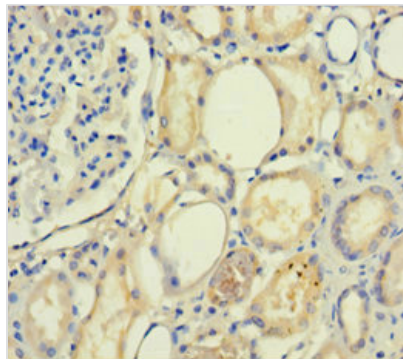




# PLA2R1 Antibody

<b>Product Code</b>	CSB-PA623780LA01HU
<b>Storage</b>	Upon receipt, store at -20°C or -80°C. Avoid repeated freeze.
<b>Uniprot No.</b>	Q13018
<b>Immunogen</b>	Recombinant Human Secretory phospholipase A2 receptor protein (395-530AA)
<b>Raised In</b>	Rabbit
<b>Species Reactivity</b>	Human
<b>Tested Applications</b>	ELISA, IHC; Recommended dilution: IHC:1:20-1:200
<b>Form</b>	Liquid
<b>Conjugate</b>	Non-conjugated
<b>Storage Buffer</b>	Preservative: 0.03% Proclin 300 Constituents: 50% Glycerol, 0.01M PBS, PH 7.4
<b>Purification Method</b>	>95%, Protein G purified
<b>Isotype</b>	IgG
<b>Clonality</b>	Polyclonal
<b>Alias</b>	Secretory phospholipase A2 receptor (PLA2-R) (PLA2R) (180 kDa secretory phospholipase A2 receptor) (C-type lectin domain family 13 member C) (M-type receptor) [Cleaved into: Soluble secretory phospholipase A2 receptor (Soluble PLA2-R) (Soluble PLA2R)], PLA2R1, CLEC13C
<b>Immunogen Species</b>	Homo sapiens (Human)
<b>Research Area</b>	Cardiovascular
<b>Target Names</b>	PLA2R1

## Image



Immunohistochemistry of paraffin-embedded human kidney tissue using CSB-PA623780LA01HU at dilution of 1:100