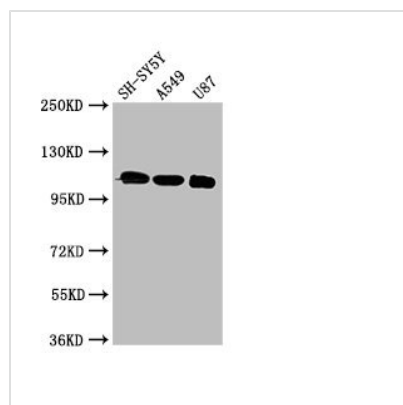




LRP8 Antibody

Product Code	CSB-PA623900LA01HU
Storage	Upon receipt, store at -20°C or -80°C. Avoid repeated freeze.
Uniprot No.	Q14114
Immunogen	Recombinant Human Low-density lipoprotein receptor-related protein 8 protein (131-332AA)
Raised In	Rabbit
Species Reactivity	Human
Tested Applications	ELISA, WB, IF; Recommended dilution: WB:1:500-1:5000, IF:1:50-1:200
Form	Liquid
Conjugate	Non-conjugated
Storage Buffer	Preservative: 0.03% Proclin 300 Constituents: 50% Glycerol, 0.01M PBS, PH 7.4
Purification Method	>95%, Protein G purified
Isotype	IgG
Clonality	Polyclonal
Alias	Low-density lipoprotein receptor-related protein 8 (LRP-8) (Apolipoprotein E receptor 2), LRP8, APOER2
Immunogen Species	Homo sapiens (Human)
Research Area	Neuroscience
Target Names	LRP8

Image



Western Blot

Positive WB detected in: SH-SY5Y whole cell lysate, A549 whole cell lysate, U87 whole cell lysate

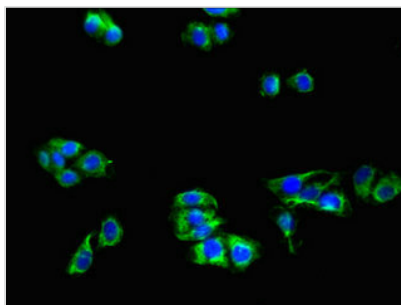
All lanes: LRP8 antibody at 3µg/ml

Secondary

Goat polyclonal to rabbit IgG at 1/50000 dilution

Predicted band size: 106, 78, 100, 88 kDa

Observed band size: 106 kDa



Immunofluorescent analysis of HepG2 cells using CSB-PA623900LA01HU at dilution of 1:100 and Alexa Fluor 488-conjugated AffiniPure Goat Anti-Rabbit IgG(H+L)