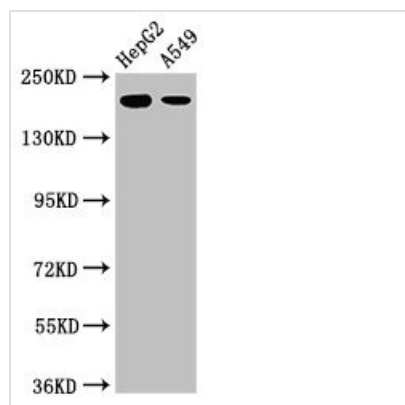




LRRK1 Antibody

Product Code	CSB-PA655748LA01HU
Storage	Upon receipt, store at -20°C or -80°C. Avoid repeated freeze.
Uniprot No.	Q38SD2
Immunogen	Recombinant Human Leucine-rich repeat serine/threonine-protein kinase 1 protein (1-68AA)
Raised In	Rabbit
Species Reactivity	Human
Tested Applications	ELISA, WB; Recommended dilution: WB:1:500-1:5000
Form	Liquid
Conjugate	Non-conjugated
Storage Buffer	Preservative: 0.03% Proclin 300 Constituents: 50% Glycerol, 0.01M PBS, pH 7.4
Purification Method	>95%, Protein G purified
Isotype	IgG
Clonality	Polyclonal
Alias	Leucine-rich repeat serine/threonine-protein kinase 1 (EC 2.7.11.1), LRRK1, KIAA1790
Immunogen Species	Homo sapiens (Human)
Research Area	Neuroscience
Target Names	LRRK1

Image



Western Blot

Positive WB detected in: HepG2 whole cell lysate, A549 whole cell lysate

All lanes: LRRK1 antibody at 3μg/ml

Secondary

Goat polyclonal to rabbit IgG at 1/50000 dilution

Predicted band size: 226, 29 kDa

Observed band size: 226 kDa