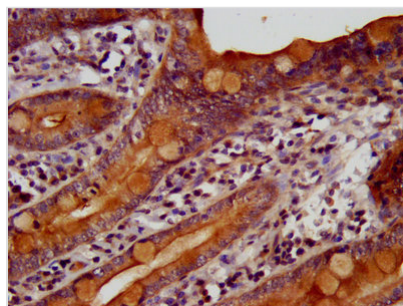




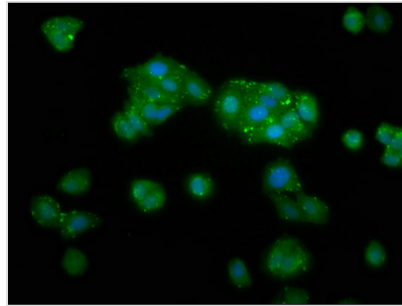
# TKFC Antibody

<b>Product Code</b>	CSB-PA659468LA01HU
<b>Storage</b>	Upon receipt, store at -20°C or -80°C. Avoid repeated freeze.
<b>Uniprot No.</b>	Q3LXA3
<b>Immunogen</b>	Recombinant Human Triokinase/FMN cyclase protein (396-561AA)
<b>Raised In</b>	Rabbit
<b>Species Reactivity</b>	Human
<b>Tested Applications</b>	ELISA, IHC, IF; Recommended dilution: IHC:1:200-1:500, IF:1:50-1:200
<b>Form</b>	Liquid
<b>Conjugate</b>	Non-conjugated
<b>Storage Buffer</b>	Preservative: 0.03% Proclin 300 Constituents: 50% Glycerol, 0.01M PBS, pH 7.4
<b>Purification Method</b>	>95%, Protein G purified
<b>Isotype</b>	IgG
<b>Clonality</b>	Polyclonal
<b>Alias</b>	Triokinase/FMN cyclase (Bifunctional ATP-dependent dihydroxyacetone kinase/FAD-AMP lyase (cyclizing)) [Includes: ATP-dependent dihydroxyacetone kinase (DHA kinase) (EC 2.7.1.28) (EC 2.7.1.29) (Glycerone kinase) (Triokinase) (Triose kinase); FAD-AMP lyase (cyclizing) (EC 4.6.1.15) (FAD-AMP lyase (cyclic FMN forming)) (FMN cyclase)], TKFC, DAK
<b>Immunogen Species</b>	Homo sapiens (Human)
<b>Research Area</b>	Signal Transduction
<b>Target Names</b>	TKFC

## Image



IHC image of CSB-PA659468LA01HU diluted at 1:400 and staining in paraffin-embedded human small intestine tissue performed on a Leica Bond<sup>TM</sup> system. After dewaxing and hydration, antigen retrieval was mediated by high pressure in a citrate buffer (pH 6.0). Section was blocked with 10% normal goat serum 30min at RT. Then primary antibody (1% BSA) was incubated at 4°C overnight. The primary is detected by a biotinylated secondary antibody and visualized using an HRP conjugated SP system.



Immunofluorescence staining of HepG2 cells with CSB-PA659468LA01HU at 1:133, counter-stained with DAPI. The cells were fixed in 4% formaldehyde, permeabilized using 0.2% Triton X-100 and blocked in 10% normal Goat Serum. The cells were then incubated with the antibody overnight at 4°C. The secondary antibody was Alexa Fluor 488-conjugated AffiniPure Goat Anti-Rabbit IgG(H+L).