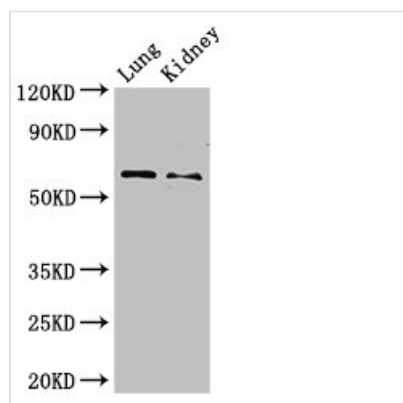




Plbd2 Antibody

| | |
|----------------------------|---|
| Product Code | CSB-PA683927LA01RA |
| Storage | Upon receipt, store at -20°C or -80°C. Avoid repeated freeze. |
| Uniprot No. | Q4QQW8 |
| Immunogen | Recombinant Rat Putative phospholipase B-like 2 protein (36-585AA) |
| Raised In | Rabbit |
| Species Reactivity | Rat, Mouse |
| Tested Applications | ELISA, WB; Recommended dilution: WB:1:500-1:5000 |
| Form | Liquid |
| Conjugate | Non-conjugated |
| Storage Buffer | Preservative: 0.03% Proclin 300 Constituents: 50% Glycerol, 0.01M PBS, PH 7.4 |
| Purification Method | >95%, Protein G purified |
| Isotype | IgG |
| Clonality | Polyclonal |
| Alias | Putative phospholipase B-like 2 (EC 3.1.1.-) (LAMA-like protein 2) (Lamina ancestor homolog 2) (Phospholipase B domain-containing protein 2), Plbd2 |
| Immunogen Species | Rattus norvegicus (Rat) |
| Research Area | Signal Transduction |
| Target Names | Plbd2 |

Image



Western Blot

Positive WB detected in: Mouse lung tissue,

Mouse kidney tissue

All lanes: Plbd2 antibody at 3µg/ml

Secondary

Goat polyclonal to rabbit IgG at 1/50000 dilution

Predicted band size: 66 kDa

Observed band size: 66 kDa