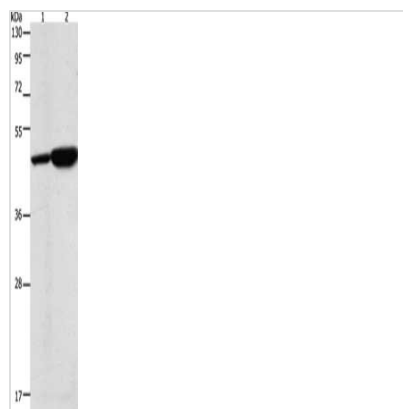




ENO2 Antibody

| | |
|----------------------------|---|
| Product Code | CSB-PA693524 |
| Storage | Upon receipt, store at -20°C or -80°C. Avoid repeated freeze. |
| Uniprot No. | P09104 |
| Immunogen | Synthetic peptide of Human ENO2 |
| Raised In | Rabbit |
| Species Reactivity | Human,Mouse,Rat |
| Tested Applications | ELISA,WB;ELISA:1:2000-1:10000,WB:1:1000-1:5000 |
| Form | Liquid |
| Conjugate | Non-conjugated |
| Storage Buffer | -20°C, pH7.4 PBS, 0.05% NaN ₃ , 40% Glycerol |
| Purification Method | Antigen affinity purification |
| Isotype | IgG |
| Immunogen Species | Homo sapiens (Human) |
| Target Names | ENO2 |

Image



Gel: 10%SDS-PAGE, Lysate: 40 µg, Lane 1-2: 293T cells, Jurkat cells, Primary antibody: CSB-PA693524(ENO2 Antibody) at dilution 1/1250, Secondary antibody: Goat anti rabbit IgG at 1/8000 dilution, Exposure time: 30 seconds