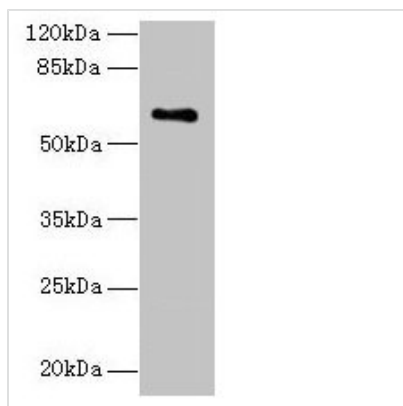




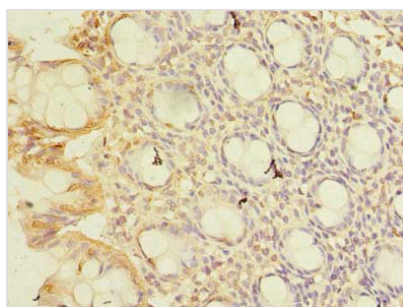
CWF19L1 Antibody

Product Code	CSB-PA727965LA01HU
Storage	Upon receipt, store at -20°C or -80°C. Avoid repeated freeze.
Uniprot No.	Q69YN2
Immunogen	Recombinant Human CWF19-like protein 1 protein (101-330AA)
Raised In	Rabbit
Species Reactivity	Human
Tested Applications	ELISA, WB, IHC; Recommended dilution: WB:1:500-1:2000, IHC:1:20-1:200
Form	Liquid
Conjugate	Non-conjugated
Storage Buffer	Preservative: 0.03% Proclin 300 Constituents: 50% Glycerol, 0.01M PBS, PH 7.4
Purification Method	>95%, Protein G purified
Isotype	IgG
Clonality	Polyclonal
Alias	CWF19-like protein 1 (C19L1), CWF19L1
Immunogen Species	Homo sapiens (Human)
Research Area	Cell Biology
Target Names	CWF19L1

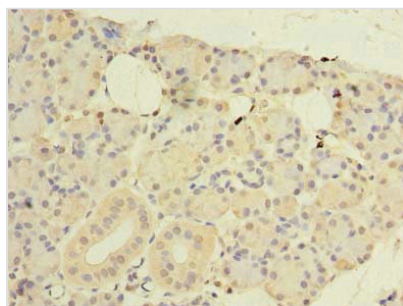
Image



Western blot
All lanes: CWF19L1 antibody at 4µg/ml + Raji whole cell lysate
Secondary
Goat polyclonal to rabbit IgG at 1/10000 dilution
Predicted band size: 61, 28, 46 kDa
Observed band size: 61 kDa



Immunohistochemistry of paraffin-embedded human colon tissue using CSB-PA727965LA01HU at dilution of 1:100



Immunohistochemistry of paraffin-embedded human pancreatic tissue using CSB-PA727965LA01HU at dilution of 1:100