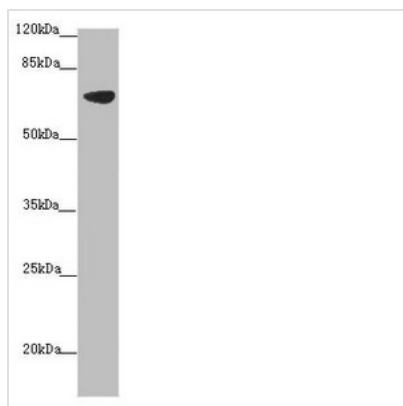




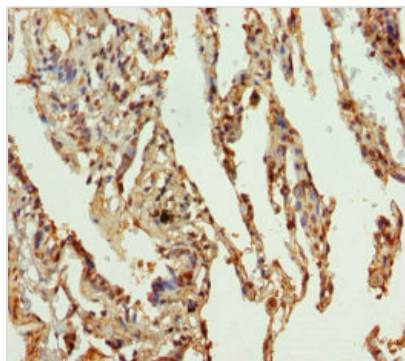
SLC34A1 Antibody

Product Code	CSB-PA733714DSR2HU
Storage	Upon receipt, store at -20°C or -80°C. Avoid repeated freeze.
Uniprot No.	Q06495
Immunogen	Recombinant Human Sodium-dependent phosphate transport protein 2A protein (1-103AA)
Raised In	Rabbit
Species Reactivity	Human, Mouse
Tested Applications	ELISA, WB, IHC; Recommended dilution: WB:1:100-1:500, IHC:1:20-1:200
Form	Liquid
Conjugate	Non-conjugated
Storage Buffer	PBS with 0.02% sodium azide, 50% glycerol, pH7.3.
Purification Method	Antigen Affinity Purified
Isotype	IgG
Clonality	Polyclonal
Product Type	Polyclonal Antibody
Immunogen Species	Homo sapiens (Human)
Research Area	Signal Transduction
Target Names	SLC34A1

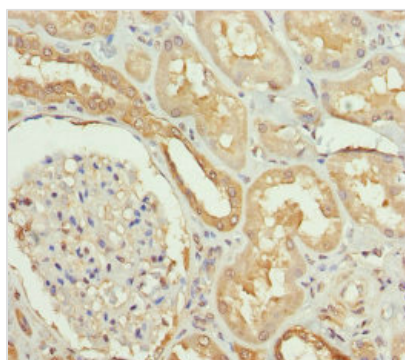
Image



Western blot
 All lanes: SLC34A1 antibody at 1:150+ Mouse brain tissue
 Secondary
 Goat polyclonal to rabbit IgG at 1/10000 dilution
 Predicted band size: 69, 37 kDa
 Observed band size: 69 kDa



Immunohistochemistry of paraffin-embedded human lung tissue using CSB-PA733714DSR2HU at dilution of 1:100



Immunohistochemistry of paraffin-embedded human kidney tissue using CSB-PA733714DSR2HU at dilution of 1:100