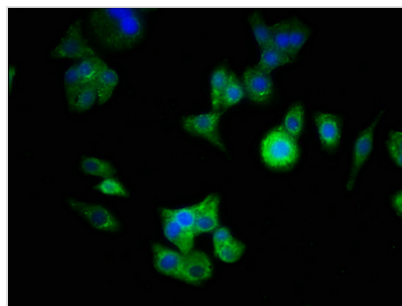




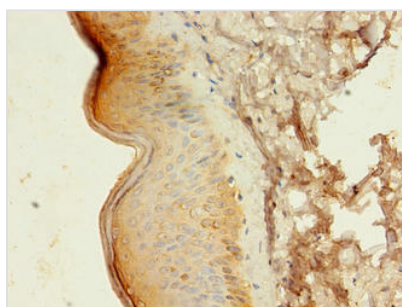
ATG16L1 Antibody

Product Code	CSB-PA734569LA01HU
Storage	Upon receipt, store at -20°C or -80°C. Avoid repeated freeze.
Uniprot No.	Q676U5
Immunogen	Recombinant Human Autophagy-related protein 16-1 protein (1-607AA)
Raised In	Rabbit
Species Reactivity	Human
Tested Applications	ELISA, IHC, IF; Recommended dilution: IHC:1:20-1:200, IF:1:200-1:500
Form	Liquid
Conjugate	Non-conjugated
Storage Buffer	Preservative: 0.03% Proclin 300 Constituents: 50% Glycerol, 0.01M PBS, PH 7.4
Purification Method	>95%, Protein G purified
Isotype	IgG
Clonality	Polyclonal
Alias	Autophagy-related protein 16-1 (APG16-like 1), ATG16L1, APG16L
Immunogen Species	Homo sapiens (Human)
Research Area	Cell Biology
Target Names	ATG16L1

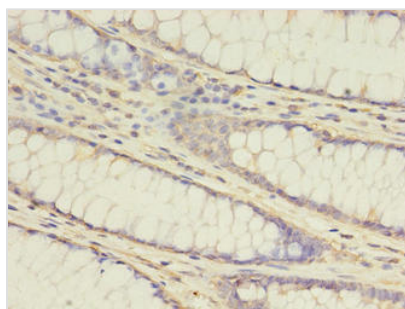
Image



Immunofluorescence staining of HepG2 cells with CSB-PA734569LA01HU at 1:333, counter-stained with DAPI. The cells were fixed in 4% formaldehyde, permeabilized using 0.2% Triton X-100 and blocked in 10% normal Goat Serum. The cells were then incubated with the antibody overnight at 4°C. The secondary antibody was Alexa Fluor 488-conjugated AffiniPure Goat Anti-Rabbit IgG(H+L).



Immunohistochemistry of paraffin-embedded human skin tissue using CSB-PA734569LA01HU at dilution of 1:100



Immunohistochemistry of paraffin-embedded human colon cancer using CSB-PA734569LA01HU at dilution of 1:100