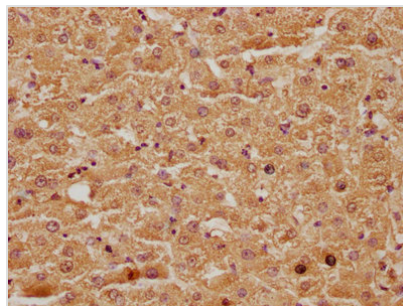




CLEC4G Antibody

Product Code	CSB-PA744269LA01HU
Storage	Upon receipt, store at -20°C or -80°C. Avoid repeated freeze.
Uniprot No.	Q6UXB4
Immunogen	Recombinant Human C-type lectin domain family 4 member G protein (66-293AA)
Raised In	Rabbit
Species Reactivity	Human
Tested Applications	ELISA, IHC; Recommended dilution: IHC:1:20-1:200
Form	Liquid
Conjugate	Non-conjugated
Storage Buffer	Preservative: 0.03% Proclin 300 Constituents: 50% Glycerol, 0.01M PBS, pH 7.4
Purification Method	Antigen Affinity Purified
Isotype	IgG
Clonality	Polyclonal
Alias	C-type lectin domain family 4 member G (Liver and lymph node sinusoidal endothelial cell C-type lectin) (LSEctin), CLEC4G
Immunogen Species	Homo sapiens (Human)
Research Area	Immunology
Target Names	CLEC4G

Image



IHC image of CSB-PA744269LA01HU diluted at 1:100 and staining in paraffin-embedded human liver tissue performed on a Leica BondTM system. After dewaxing and hydration, antigen retrieval was mediated by high pressure in a citrate buffer (pH 6.0). Section was blocked with 10% normal goat serum 30min at RT. Then primary antibody (1% BSA) was incubated at 4°C overnight. The primary is detected by a biotinylated secondary antibody and visualized using an HRP conjugated SP system.