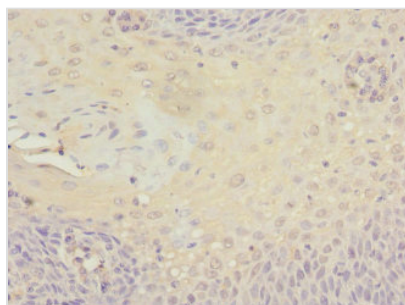




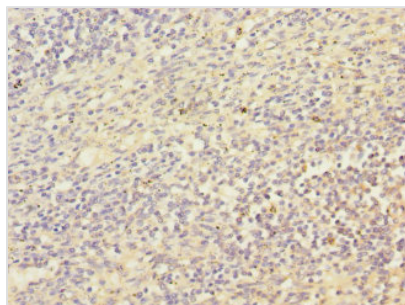
MCM10 Antibody

Product Code	CSB-PA745335ESR2HU
Storage	Upon receipt, store at -20°C or -80°C. Avoid repeated freeze.
Uniprot No.	Q7L590
Immunogen	Recombinant Human Protein MCM10 homolog protein (616-875AA)
Raised In	Rabbit
Species Reactivity	Human
Tested Applications	ELISA, IHC; Recommended dilution: IHC:1:20-1:200
Form	Liquid
Conjugate	Non-conjugated
Storage Buffer	PBS with 0.02% sodium azide, 50% glycerol, pH7.3.
Purification Method	Antigen Affinity Purified
Isotype	IgG
Clonality	Polyclonal
Alias	Protein MCM10 homolog (HsMCM10), MCM10
Immunogen Species	Homo sapiens (Human)
Research Area	Epigenetics and Nuclear Signaling
Target Names	MCM10

Image



Immunohistochemistry of paraffin-embedded human tonsil tissue using CSB-PA745335ESR2HU at dilution of 1:100



Immunohistochemistry of paraffin-embedded human spleen tissue using CSB-PA745335ESR2HU at dilution of 1:100