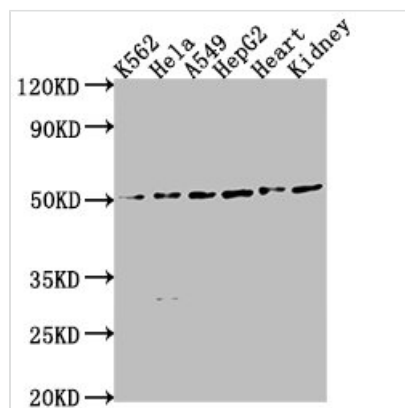




ENPP7 Antibody

Product Code	CSB-PA751012LA01HU
Storage	Upon receipt, store at -20°C or -80°C. Avoid repeated freeze.
Uniprot No.	Q6UWV6
Immunogen	Recombinant Human Ectonucleotide pyrophosphatase/phosphodiesterase family member 7 protein (22-216AA)
Raised In	Rabbit
Species Reactivity	Human, Mouse
Tested Applications	ELISA, WB, IF; Recommended dilution: WB:1:1000-1:5000, IF:1:200-1:500
Form	Liquid
Conjugate	Non-conjugated
Storage Buffer	Preservative: 0.03% Proclin 300 Constituents: 50% Glycerol, 0.01M PBS, pH 7.4
Purification Method	>95%, Protein G purified
Isotype	IgG
Clonality	Polyclonal
Alias	Ectonucleotide pyrophosphatase/phosphodiesterase family member 7 (E-NPP 7) (NPP-7) (EC 3.1.4.12) (Alkaline sphingomyelin phosphodiesterase) (Intestinal alkaline sphingomyelinase) (Alk-SMase), ENPP7
Immunogen Species	Homo sapiens (Human)
Research Area	Cell Biology
Target Names	ENPP7

Image



Western Blot

Positive WB detected in: K562 whole cell lysate, HeLa whole cell lysate, A549 whole cell lysate, HepG2 whole cell lysate, Mouse heart tissue, Mouse kidney tissue

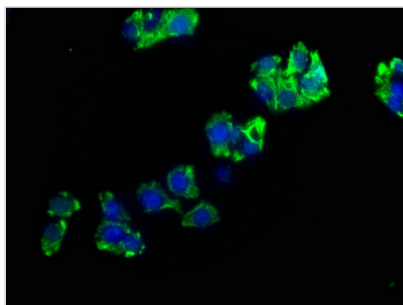
All lanes: ENPP7 antibody at 1:2000

Secondary

Goat polyclonal to rabbit IgG at 1/50000 dilution

Predicted band size: 52 kDa

Observed band size: 52 kDa



Immunofluorescence staining of HepG2 cells with CSB-PA751012LA01HU at 1:200, counter-stained with DAPI. The cells were fixed in 4% formaldehyde, permeabilized using 0.2% Triton X-100 and blocked in 10% normal Goat Serum. The cells were then incubated with the antibody overnight at 4°C. The secondary antibody was Alexa Fluor 488-conjugated AffiniPure Goat Anti-Rabbit IgG(H+L).