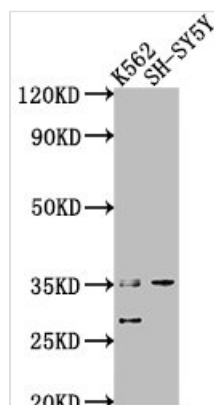




# THOC6 Antibody

<b>Product Code</b>	CSB-PA769793LA01HU
<b>Storage</b>	Upon receipt, store at -20°C or -80°C. Avoid repeated freeze.
<b>Uniprot No.</b>	Q86W42
<b>Immunogen</b>	Recombinant Human THO complex subunit 6 homolog protein (56-315AA)
<b>Raised In</b>	Rabbit
<b>Species Reactivity</b>	Human
<b>Tested Applications</b>	ELISA, WB; Recommended dilution: WB:1:1000-1:5000
<b>Form</b>	Liquid
<b>Conjugate</b>	Non-conjugated
<b>Storage Buffer</b>	Preservative: 0.03% Proclin 300 Constituents: 50% Glycerol, 0.01M PBS, pH 7.4
<b>Purification Method</b>	>95%, Protein G purified
<b>Isotype</b>	IgG
<b>Clonality</b>	Polyclonal
<b>Alias</b>	THO complex subunit 6 homolog (Functional spliceosome-associated protein 35) (fSAP35) (WD repeat-containing protein 58), THOC6, WDR58
<b>Immunogen Species</b>	Homo sapiens (Human)
<b>Research Area</b>	Cell Biology
<b>Target Names</b>	THOC6

## Image



### Western Blot

Positive WB detected in: K562 whole cell lysate, SH-SY5Y whole cell lysate

All lanes: THOC6 antibody at 1:2000

Secondary

Goat polyclonal to rabbit IgG at 1/50000 dilution

Predicted band size: 38, 35, 33 kDa

Observed band size: 35 kDa