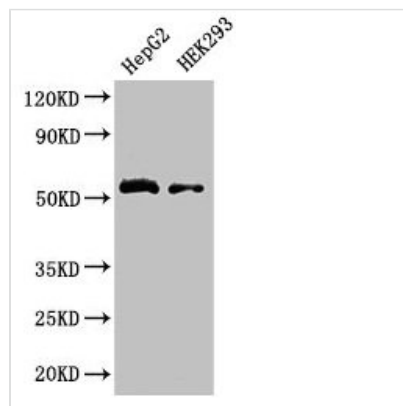




LDHD Antibody

Product Code	CSB-PA801250LA01HU
Storage	Upon receipt, store at -20°C or -80°C. Avoid repeated freeze.
Uniprot No.	Q86WU2
Immunogen	Recombinant Human Probable D-lactate dehydrogenase, mitochondrial protein (310-507AA)
Raised In	Rabbit
Species Reactivity	Human
Tested Applications	ELISA, WB, IHC, IF; Recommended dilution: WB:1:500-1:5000, IHC:1:20-1:200, IF:1:50-1:200
Form	Liquid
Conjugate	Non-conjugated
Storage Buffer	Preservative: 0.03% Proclin 300 Constituents: 50% Glycerol, 0.01M PBS, PH 7.4
Purification Method	>95%, Protein G purified
Isotype	IgG
Clonality	Polyclonal
Alias	Probable D-lactate dehydrogenase, mitochondrial (DLD) (Lactate dehydrogenase D) (EC 1.1.2.4), LDHD
Immunogen Species	Homo sapiens (Human)
Research Area	Signal Transduction
Target Names	LDHD

Image



Western Blot

Positive WB detected in: HepG2 whole cell lysate, HEK293 whole cell lysate

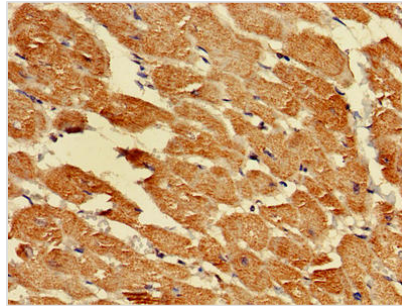
All lanes: LDHD antibody at 3.2µg/ml

Secondary

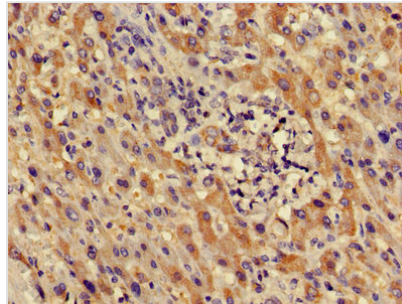
Goat polyclonal to rabbit IgG at 1/50000 dilution

Predicted band size: 55, 53 kDa

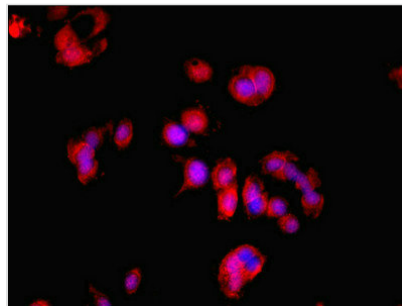
Observed band size: 55 kDa



Immunohistochemistry of paraffin-embedded human heart tissue using CSB-PA801250LA01HU at dilution of 1:100



Immunohistochemistry of paraffin-embedded human liver cancer using CSB-PA801250LA01HU at dilution of 1:100



Immunofluorescent analysis of MCF-7 cells using CSB-PA801250LA01HU at dilution of 1:100 and Cy3-conjugated Goat Anti-Rabbit IgG