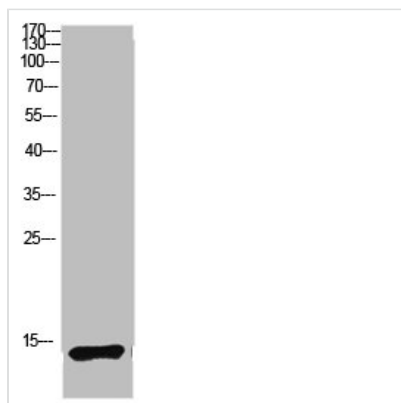




MAP1LC3B Antibody

| | |
|----------------------------|--|
| Product Code | CSB-PA801588 |
| Storage | Upon receipt, store at -20°C or -80°C. Avoid repeated freeze. |
| Uniprot No. | Q9GZQ8 |
| Immunogen | Synthetic peptide from Human protein at AA range: 1-50 |
| Raised In | Rabbit |
| Species Reactivity | Human,Mouse,Rat |
| Tested Applications | WB,ELISA;WB:1:500-2000,ELISA:1:10000-20000 |
| Form | Liquid |
| Conjugate | Non-conjugated |
| Storage Buffer | PBS, pH 7.4, containing 0.02% sodium azide as Preservative and 50% Glycerol. |
| Purification Method | The antibody was affinity-purified from rabbit serum by affinity-chromatography using specific immunogen. |
| Alias | Microtubule-associated proteins 1A/1B light chain 3B (Autophagy-related protein LC3 B) (Autophagy-related ubiquitin-like modifier LC3 B) (MAP1 light chain 3-like protein 2) (MAP1A/MAP1B light chain 3 B) (MAP1A/MAP1B LC3 B) (Microtubule-associated protein 1 light chain 3 beta) |
| Immunogen Species | Homo sapiens (Human) |
| Target Names | MAP1LC3B |

Image



Western blot analysis of mouse lung lysate, antibody was diluted at 1:1000. Secondary antibody was diluted at 1:20000