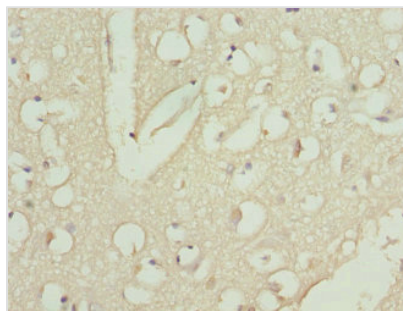




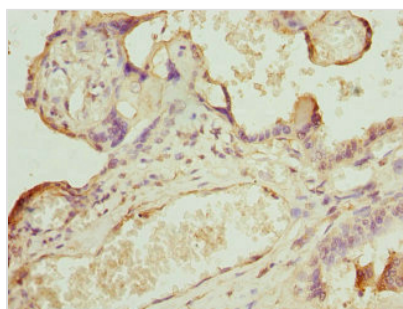
CAMK1D Antibody

Product Code	CSB-PA812863ESR1HU
Storage	Upon receipt, store at -20°C or -80°C. Avoid repeated freeze.
Uniprot No.	Q8IU85
Immunogen	Recombinant Human Calcium/calmodulin-dependent protein kinase type 1D protein (1-180AA)
Raised In	Rabbit
Species Reactivity	Human
Tested Applications	ELISA, IHC; Recommended dilution: IHC:1:20-1:200
Form	Liquid
Conjugate	Non-conjugated
Storage Buffer	PBS with 0.02% sodium azide, 50% glycerol, pH7.3.
Purification Method	Antigen Affinity Purified
Isotype	IgG
Clonality	Polyclonal
Alias	Calcium/calmodulin-dependent protein kinase type 1D (EC 2.7.11.17) (CaM kinase I delta) (CaM kinase ID) (CaM-KI delta) (CaMKI delta) (CaMKID) (CaMKI-like protein kinase) (CKLiK), CAMK1D, CAMKID
Immunogen Species	Homo sapiens (Human)
Research Area	Cell Biology
Target Names	CAMK1D

Image



Immunohistochemistry of paraffin-embedded human brain tissue using CSB-PA812863ESR1HU at dilution of 1:100



Immunohistochemistry of paraffin-embedded human placenta tissue using CSB-PA812863ESR1HU at dilution of 1:100

