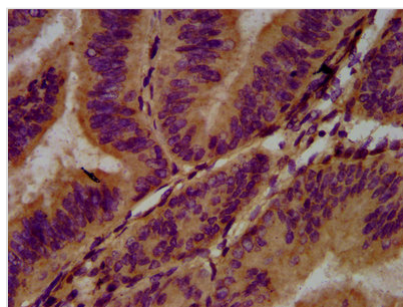




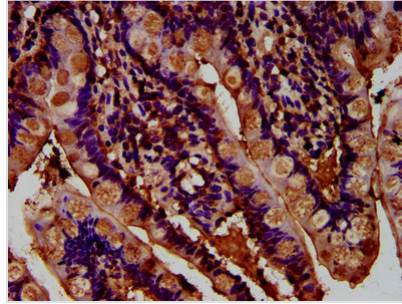
ADGRG1 Antibody

Product Code	CSB-PA812970LA01HU
Storage	Upon receipt, store at -20°C or -80°C. Avoid repeated freeze.
Uniprot No.	Q9Y653
Immunogen	Recombinant Human Adhesion G-protein coupled receptor G1 protein (26-216AA)
Raised In	Rabbit
Species Reactivity	Human
Tested Applications	ELISA, IHC, IF; Recommended dilution: IHC:1:200-1:500, IF:1:50-1:200
Form	Liquid
Conjugate	Non-conjugated
Storage Buffer	Preservative: 0.03% Proclin 300 Constituents: 50% Glycerol, 0.01M PBS, pH 7.4
Purification Method	>95%, Protein G purified
Isotype	IgG
Clonality	Polyclonal
Alias	Adhesion G-protein coupled receptor G1 (G-protein coupled receptor 56) (Protein TM7XN1) [Cleaved into: ADGRG1 N-terminal fragment (ADGRG1 NT) (GPR56 N-terminal fragment) (GPR56 NT) (GPR56(N)) (GPR56 extracellular subunit) (GPR56 subunit alpha); ADGRG1 C-terminal fragment (ADGRG1 CT) (GPR56 C-terminal fragment) (GPR56 CT) (GPR56(C)) (GPR56 seven-transmembrane subunit) (GPR56 7TM) (GPR56 subunit beta)], ADGRG1, GPR56 TM7LN4 TM7XN1
Immunogen Species	Homo sapiens (Human)
Research Area	Neuroscience
Target Names	ADGRG1

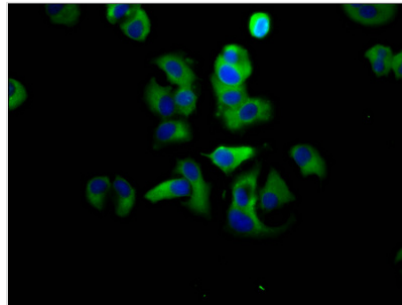
Image



IHC image of CSB-PA812970LA01HU diluted at 1:400 and staining in paraffin-embedded human endometrial cancer performed on a Leica BondTM system. After dewaxing and hydration, antigen retrieval was mediated by high pressure in a citrate buffer (pH 6.0). Section was blocked with 10% normal goat serum 30min at RT. Then primary antibody (1% BSA) was incubated at 4°C overnight. The primary is detected by a biotinylated secondary antibody and visualized using an HRP conjugated SP system.



IHC image of CSB-PA812970LA01HU diluted at 1:400 and staining in paraffin-embedded human small intestine tissue performed on a Leica Bond™ system. After dewaxing and hydration, antigen retrieval was mediated by high pressure in a citrate buffer (pH 6.0). Section was blocked with 10% normal goat serum 30min at RT. Then primary antibody (1% BSA) was incubated at 4°C overnight. The primary is detected by a biotinylated secondary antibody and visualized using an HRP conjugated SP system.



Immunofluorescence staining of MCF-7 cells with CSB-PA812970LA01HU at 1:133, counter-stained with DAPI. The cells were fixed in 4% formaldehyde, permeabilized using 0.2% Triton X-100 and blocked in 10% normal Goat Serum. The cells were then incubated with the antibody overnight at 4°C. The secondary antibody was Alexa Fluor 488-conjugated AffiniPure Goat Anti-Rabbit IgG(H+L).