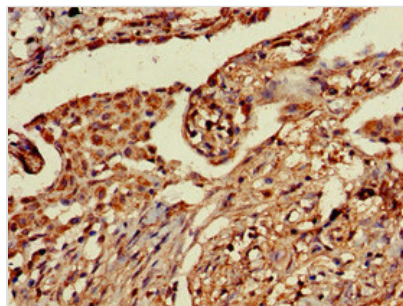




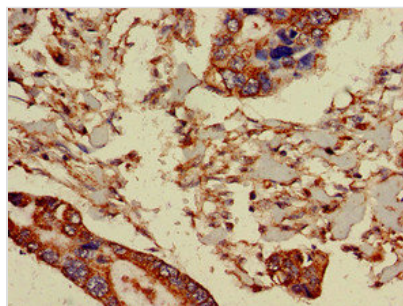
PRR11 Antibody

Product Code	CSB-PA836225LA01HU
Storage	Upon receipt, store at -20°C or -80°C. Avoid repeated freeze.
Uniprot No.	Q96HE9
Immunogen	Recombinant Human Proline-rich protein 11 protein (1-360AA)
Raised In	Rabbit
Species Reactivity	Human, Mouse
Tested Applications	ELISA, WB, IHC, IF; Recommended dilution: WB:1:200-1:5000, IHC:1:20-1:200, IF:1:50-1:200
Form	Liquid
Conjugate	Non-conjugated
Storage Buffer	Preservative: 0.03% Proclin 300 Constituents: 50% Glycerol, 0.01M PBS, PH 7.4
Purification Method	>95%, Protein G purified
Isotype	IgG
Clonality	Polyclonal
Alias	Proline-rich protein 11, PRR11
Immunogen Species	Homo sapiens (Human)
Research Area	Cancer
Target Names	PRR11

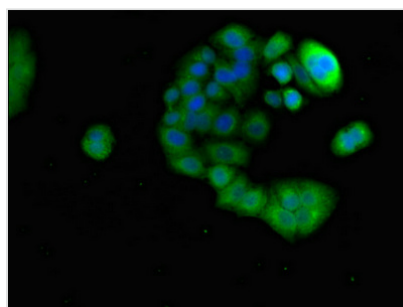
Image



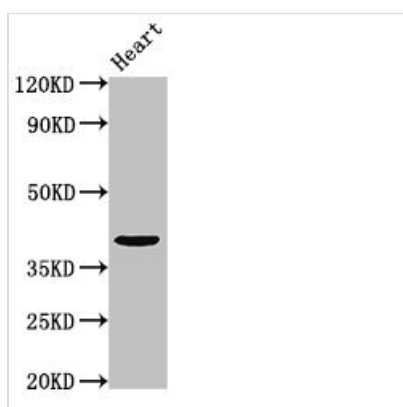
Immunohistochemistry of paraffin-embedded human lung cancer using CSB-PA836225LA01HU at dilution of 1:100



Immunohistochemistry of paraffin-embedded human pancreatic cancer using CSB-PA836225LA01HU at dilution of 1:100



Immunofluorescent analysis of PC-3 cells using CSB-PA836225LA01HU at dilution of 1:100 and Alexa Fluor 488-conjugated AffiniPure Goat Anti-Rabbit IgG(H+L)



Western Blot

Positive WB detected in: Mouse heart tissue

All lanes: PRR11 antibody at 3.2µg/ml

Secondary

Goat polyclonal to rabbit IgG at 1/50000 dilution

Predicted band size: 41 kDa

Observed band size: 41 kDa