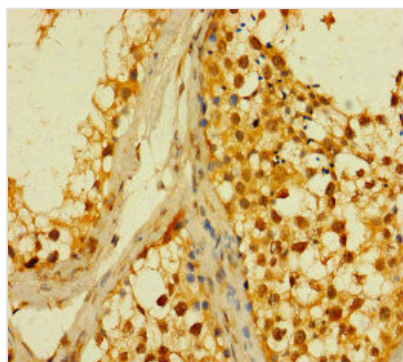




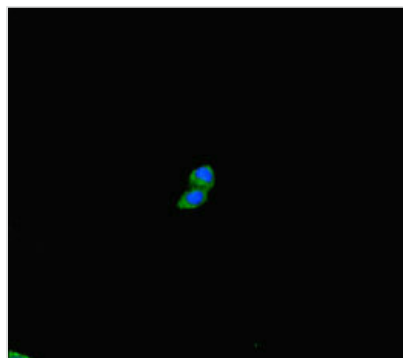
PLD6 Antibody

Product Code	CSB-PA836649LA01HU
Storage	Upon receipt, store at -20°C or -80°C. Avoid repeated freeze.
Uniprot No.	Q8N2A8
Immunogen	Recombinant Human Mitochondrial cardiolipin hydrolase protein (1-252AA)
Raised In	Rabbit
Species Reactivity	Human, Mouse
Tested Applications	ELISA, WB, IHC, IF; Recommended dilution: WB:1:2000-1:5000, IHC:1:20-1:200, IF:1:50-1:200
Form	Liquid
Conjugate	Non-conjugated
Storage Buffer	Preservative: 0.03% Proclin 300 Constituents: 50% Glycerol, 0.01M PBS, PH 7.4
Purification Method	>95%, Protein G purified
Isotype	IgG
Clonality	Polyclonal
Alias	Mitochondrial cardiolipin hydrolase (EC 3.1.-.-) (Choline phosphatase 6) (Mitochondrial phospholipase) (MitoPLD) (Phosphatidylcholine-hydrolyzing phospholipase D6) (Phospholipase D6) (PLD 6) (Protein zucchini homolog), PLD6
Immunogen Species	Homo sapiens (Human)
Research Area	Signal Transduction
Target Names	PLD6

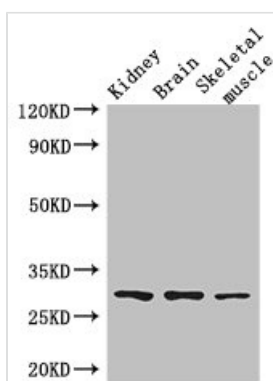
Image



Immunohistochemistry of paraffin-embedded human testis tissue using CSB-PA836649LA01HU at dilution of 1:100



Immunofluorescent analysis of HepG2 cells using CSB-PA836649LA01HU at dilution of 1:100 and Alexa Fluor 488-conjugated AffiniPure Goat Anti-Rabbit IgG(H+L)



Western Blot

Positive WB detected in: Mouse kidney tissue, Mouse brain tissue, Mouse skeletal muscle tissue

All lanes: PLD6 antibody at 2.5μg/ml

Secondary

Goat polyclonal to rabbit IgG at 1/50000 dilution

Predicted band size: 29 kDa

Observed band size: 29 kDa