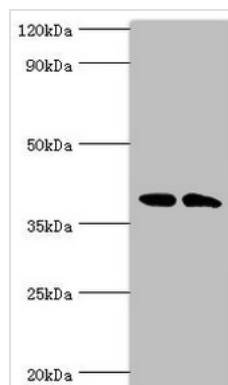




CSNK1A1L Antibody

Product Code	CSB-PA839816ESR1HU
Storage	Upon receipt, store at -20°C or -80°C. Avoid repeated freeze.
Uniprot No.	Q8N752
Immunogen	Recombinant Human Casein kinase I isoform alpha-like protein (1-337AA)
Raised In	Rabbit
Species Reactivity	Human
Tested Applications	ELISA, WB, IHC; Recommended dilution: WB:1:500-1:2000, IHC:1:20-1:200
Form	Liquid
Conjugate	Non-conjugated
Storage Buffer	PBS with 0.02% sodium azide, 50% glycerol, pH7.3.
Purification Method	Antigen Affinity Purified
Isotype	IgG
Clonality	Polyclonal
Alias	Casein kinase I isoform alpha-like (CKI-alpha-like) (EC 2.7.11.1) (CK1), CSNK1A1L
Immunogen Species	Homo sapiens (Human)
Research Area	Others
Target Names	CSNK1A1L

Image



Western blot

All lanes: Casein kinase I isoform alpha-like antibody at 4μg/ml

Lane 1: K562 whole cell lysate

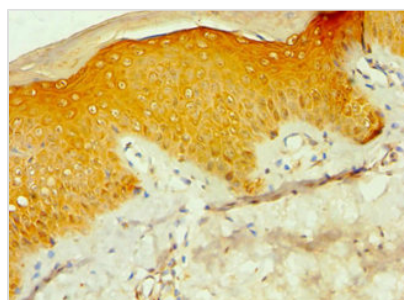
Lane 2: Hela whole cell lysate

Secondary

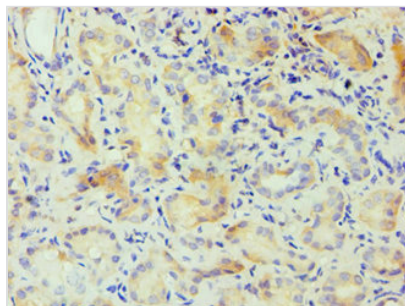
Goat polyclonal to rabbit IgG at 1/10000 dilution

Predicted band size: 39 kDa

Observed band size: 39 kDa



Immunohistochemistry of paraffin-embedded human skin tissue using CSB-PA839816ESR1HU at dilution of 1:100



Immunohistochemistry of paraffin-embedded human kidney tissue using CSB-PA839816ESR1HU at dilution of 1:100