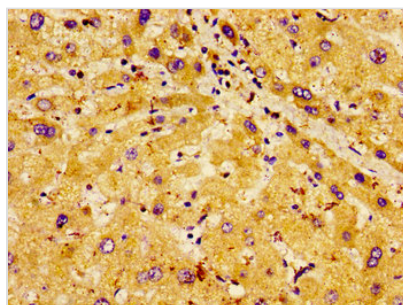




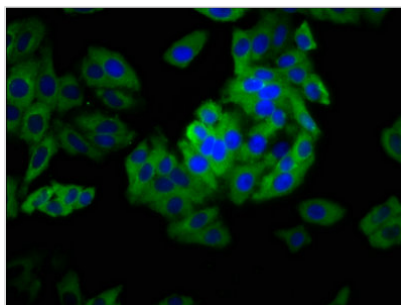
PHLDA1 Antibody

Product Code	CSB-PA845148LA01HU
Storage	Upon receipt, store at -20°C or -80°C. Avoid repeated freeze.
Uniprot No.	Q8WV24
Immunogen	Recombinant Human Pleckstrin homology-like domain family A member 1 protein (1-138AA)
Raised In	Rabbit
Species Reactivity	Human
Tested Applications	ELISA, IHC, IF; Recommended dilution: IHC:1:20-1:200, IF:1:50-1:200
Form	Liquid
Conjugate	Non-conjugated
Storage Buffer	Preservative: 0.03% Proclin 300 Constituents: 50% Glycerol, 0.01M PBS, pH 7.4
Purification Method	>95%, Protein G purified
Isotype	IgG
Clonality	Polyclonal
Alias	Pleckstrin homology-like domain family A member 1 (Apoptosis-associated nuclear protein) (Proline- and glutamine-rich protein) (PQ-rich protein) (PQR protein) (Proline- and histidine-rich protein) (T-cell death-associated gene 51 protein), PHLDA1, PHRIP TDAG51
Immunogen Species	Homo sapiens (Human)
Research Area	Microbiology
Target Names	PHLDA1

Image



Immunohistochemistry of paraffin-embedded human liver tissue using CSB-PA845148LA01HU at dilution of 1: 100



Immunofluorescence staining of HepG2 cells with CSB-PA845148LA01HU at 1: 133, counter-stained with DAPI. The cells were fixed in 4% formaldehyde, permeabilized tissue using 0.2% Triton X-100 and blocked in 10% normal Goat Serum. The cells were then incubated with the antibody overnight at 4°C. The secondary antibody was Alexa Fluor 488-conjugated AffiniPure Goat Anti-Rabbit IgG(H+L) .