



CMBL Antibody

Product Code	CSB-PA846604LA01HU
Storage	Upon receipt, store at -20°C or -80°C. Avoid repeated freeze.
Uniprot No.	Q96DG6
Immunogen	Recombinant Human Carboxymethylenebutenolidase homolog protein (2-245AA)
Raised In	Rabbit
Species Reactivity	Human, Mouse
Tested Applications	ELISA, WB, IHC, IF; Recommended dilution: WB:1:500-1:2000, IHC:1:20-1:200, IF:1:50-1:200
Form	Liquid
Conjugate	Non-conjugated
Storage Buffer	Preservative: 0.03% Proclin 300 Constituents: 50% Glycerol, 0.01M PBS, PH 7.4
Purification Method	>95%, Protein G purified
Isotype	IgG
Clonality	Polyclonal
Alias	Carboxymethylenebutenolidase homolog (EC 3.1.-.-), CMBL
Immunogen Species	Homo sapiens (Human)
Research Area	Others
Target Names	CMBL

Image



Western blot

All lanes: CMBL antibody at 1µg/ml

Lane 1: Mouse kidney tissue

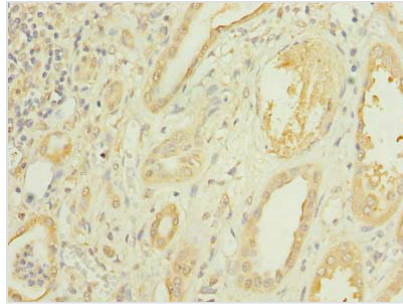
Lane 2: Mouse liver tissue

Secondary

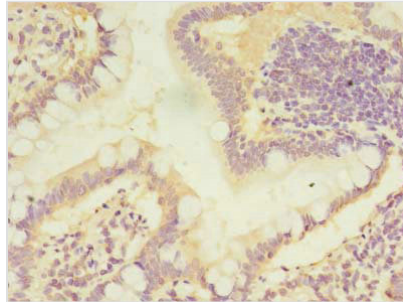
Goat polyclonal to rabbit IgG at 1/10000 dilution

Predicted band size: 29 kDa

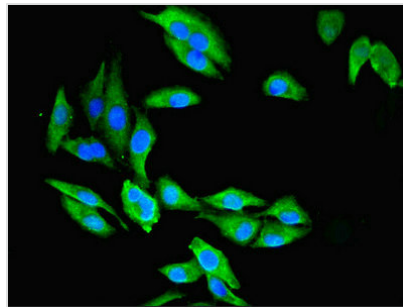
Observed band size: 29, 25 kDa



Immunohistochemistry of paraffin-embedded human kidney tissue using CSB-PA846604LA01HU at dilution of 1:100



Immunohistochemistry of paraffin-embedded human small intestine tissue using CSB-PA846604LA01HU at dilution of 1:100



Immunofluorescent analysis of Hela cells using CSB-PA846604LA01HU at dilution of 1:100 and Alexa Fluor 488-conjugated AffiniPure Goat Anti-Rabbit IgG(H+L)