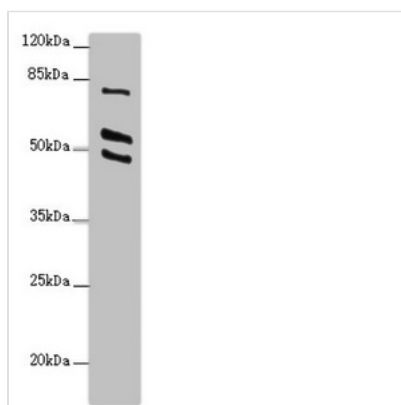




# RUFY2 Antibody

<b>Product Code</b>	CSB-PA848835ESR2HU
<b>Storage</b>	Upon receipt, store at -20°C or -80°C. Avoid repeated freeze.
<b>Uniprot No.</b>	Q8WXA3
<b>Immunogen</b>	Recombinant Human RUN and FYVE domain-containing protein 2 protein (396-655AA)
<b>Raised In</b>	Rabbit
<b>Species Reactivity</b>	Human
<b>Tested Applications</b>	ELISA, WB, IHC; Recommended dilution: WB:1:1000-1:5000, IHC:1:20-1:200
<b>Form</b>	Liquid
<b>Conjugate</b>	Non-conjugated
<b>Storage Buffer</b>	PBS with 0.02% sodium azide, 50% glycerol, pH7.3.
<b>Purification Method</b>	Antigen Affinity Purified
<b>Isotype</b>	IgG
<b>Clonality</b>	Polyclonal
<b>Alias</b>	RUN and FYVE domain-containing protein 2 (Rab4-interacting protein related), RUFY2, KIAA1537 RABIP4R
<b>Immunogen Species</b>	Homo sapiens (Human)
<b>Research Area</b>	Others
<b>Target Names</b>	RUFY2

## Image



Western blot

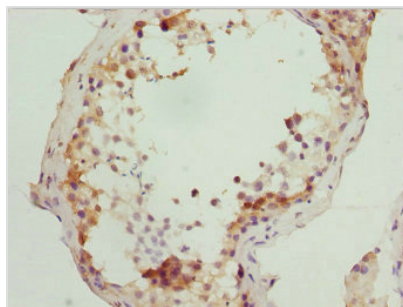
All lanes: RUFY2 antibody at 2.4μg/ml + PC-3 whole cell lysate

Secondary

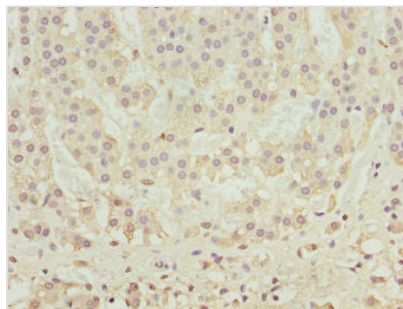
Goat polyclonal to rabbit IgG at 1/10000 dilution

Predicted band size: 76, 71, 75, 47, 44 kDa

Observed band size: 76, 55, 49 kDa



Immunohistochemistry of paraffin-embedded human testis tissue using CSB-PA848835ESR2HU at dilution of 1:100



Immunohistochemistry of paraffin-embedded human adrenal gland tissue using CSB-PA848835ESR2HU at dilution of 1:100