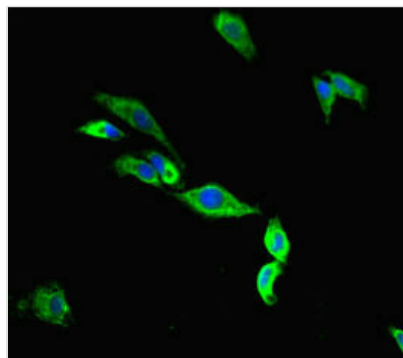




# TMC2 Antibody

|                            |  |
|----------------------------|--|
| <b>Product Code</b>        | CSB-PA855056LA01HU   |
| <b>Storage</b>             | Upon receipt, store at -20°C or -80°C. Avoid repeated freeze.                                      |
| <b>Uniprot No.</b>         | Q8TDI7   |
| <b>Immunogen</b>           | Recombinant Human Transmembrane channel-like protein 2 protein (6-206AA)                           |
| <b>Raised In</b>           | Rabbit   |
| <b>Species Reactivity</b>  | Human  |
| <b>Tested Applications</b> | ELISA, IF; Recommended dilution: IF:1:50-1:200   |
| <b>Form</b>                | Liquid   |
| <b>Conjugate</b>           | Non-conjugated   |
| <b>Storage Buffer</b>      | Preservative: 0.03% Proclin 300<br>Constituents: 50% Glycerol, 0.01M PBS, PH 7.4                   |
| <b>Purification Method</b> | >95%, Protein G purified   |
| <b>Isotype</b>             | IgG  |
| <b>Clonality</b>           | Polyclonal   |
| <b>Alias</b>               | Transmembrane channel-like protein 2 (Transmembrane cochlear-expressed protein 2), TMC2, C20orf145 |
| <b>Immunogen Species</b>   | Homo sapiens (Human)   |
| <b>Research Area</b>       | Others   |
| <b>Target Names</b>        | TMC2   |

## Image



Immunofluorescent analysis of HeLa cells using CSB-PA855056LA01HU at dilution of 1:100 and Alexa Fluor 488-conjugated AffiniPure Goat Anti-Rabbit IgG(H+L)