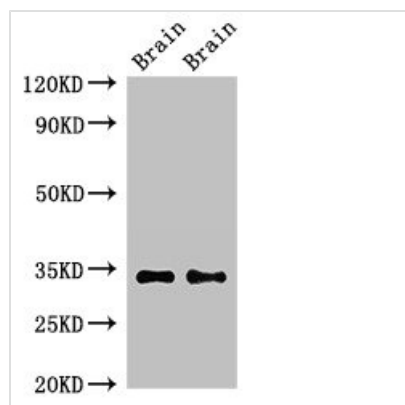




NPY6R Antibody

Product Code	CSB-PA857447LA01HU
Storage	Upon receipt, store at -20°C or -80°C. Avoid repeated freeze.
Uniprot No.	Q99463
Immunogen	Recombinant Human Putative neuropeptide Y receptor type 6 protein (1-39AA)
Raised In	Rabbit
Species Reactivity	Human, Mouse, Rat
Tested Applications	ELISA, WB, IHC, IF; Recommended dilution: WB:1:500-1:5000, IHC:1:20-1:200, IF:1:50-1:200
Form	Liquid
Conjugate	Non-conjugated
Storage Buffer	Preservative: 0.03% Proclin 300 Constituents: 50% Glycerol, 0.01M PBS, pH 7.4
Purification Method	>95%, Protein G purified
Isotype	IgG
Clonality	Polyclonal
Alias	Putative neuropeptide Y receptor type 6 (NPY6-R) (NPY Y1-like receptor) (Putative pancreatic polypeptide receptor 2) (PP2), NPY6R, NPY1RL Y2B
Immunogen Species	Homo sapiens (Human)
Research Area	Others
Target Names	NPY6R

Image



Western Blot

Positive WB detected in: Mouse brain tissue, Rat brain tissue

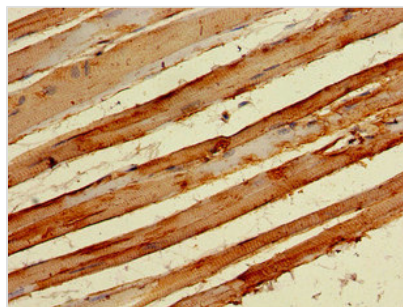
All lanes: NPY6R antibody at 2.3µg/ml

Secondary

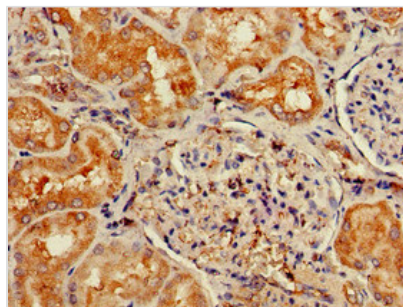
Goat polyclonal to rabbit IgG at 1/50000 dilution

Predicted band size: 34 kDa

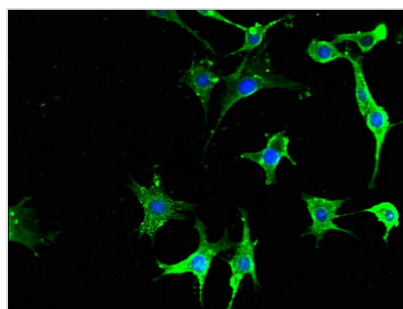
Observed band size: 34 kDa



Immunohistochemistry of paraffin-embedded human skeletal muscle tissue using CSB-PA857447LA01HU at dilution of 1:100



Immunohistochemistry of paraffin-embedded human kidney tissue using CSB-PA857447LA01HU at dilution of 1:100



Immunofluorescent analysis of MCF-7 cells using CSB-PA857447LA01HU at dilution of 1:100 and Alexa Fluor 488-conjugated AffiniPure Goat Anti-Rabbit IgG(H+L)