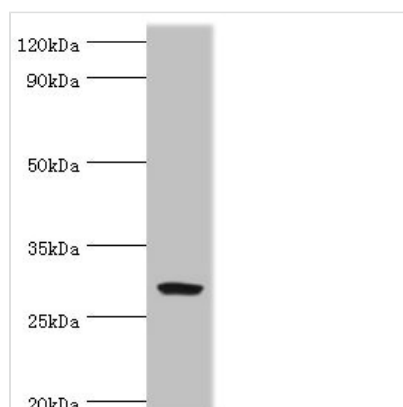




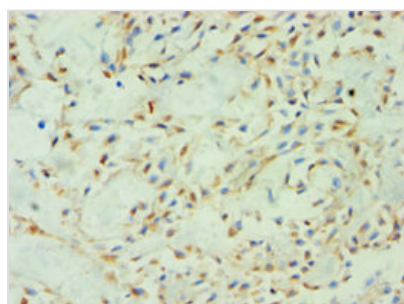
SPIN2B Antibody

| | |
|----------------------------|--|
| Product Code | CSB-PA859828ESR2HU |
| Storage | Upon receipt, store at -20°C or -80°C. Avoid repeated freeze. |
| Uniprot No. | Q9BPZ2 |
| Immunogen | Recombinant Human Spindlin-2B protein (1-258AA) |
| Raised In | Rabbit |
| Species Reactivity | Human, Mouse |
| Tested Applications | ELISA, WB, IHC; Recommended dilution: WB:1:200-1:1000, IHC:1:20-1:200 |
| Form | Liquid |
| Conjugate | Non-conjugated |
| Storage Buffer | PBS with 0.02% sodium azide, 50% glycerol, pH7.3. |
| Purification Method | Antigen Affinity Purified |
| Isotype | IgG |
| Clonality | Polyclonal |
| Alias | Spindlin-2B (Spindlin-like protein 2B) (SPIN-2) (SPIN-2B), SPIN2B, SPIN2 |
| Immunogen Species | Homo sapiens (Human) |
| Research Area | Cell Biology |
| Target Names | SPIN2B |

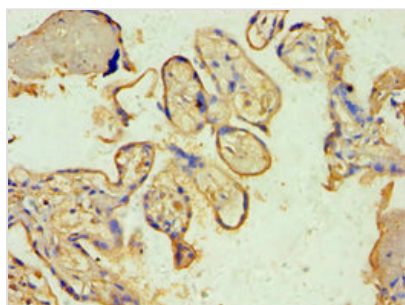
Image



Western blot
All lanes: Spindlin-2B antibody at 4µg/ml +
Mouse gastric tissue
Secondary
Goat polyclonal to rabbit IgG at 1/10000 dilution
Predicted band size: 29 kDa
Observed band size: 29 kDa



Immunohistochemistry of paraffin-embedded
human breast cancer using CSB-
PA859828ESR2HU at dilution of 1:100



Immunohistochemistry of paraffin-embedded human placenta tissue using CSB-PA859828ESR2HU at dilution of 1:100