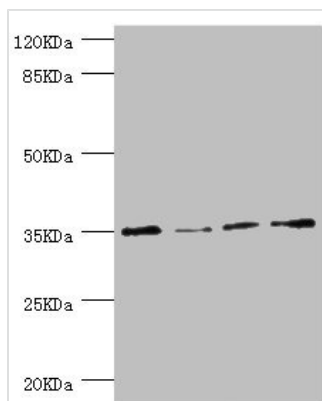




NAPG Antibody

Product Code	CSB-PA860352DSR1HU
Storage	Upon receipt, store at -20°C or -80°C. Avoid repeated freeze.
Uniprot No.	Q99747
Immunogen	Recombinant Human Gamma-soluble NSF attachment protein (1-312AA)
Raised In	Rabbit
Species Reactivity	Human
Tested Applications	ELISA, WB, IHC; Recommended dilution: WB:1:1000-1:5000, IHC:1:20-1:200
Form	Liquid
Conjugate	Non-conjugated
Storage Buffer	PBS with 0.02% sodium azide, 50% glycerol, pH7.3.
Purification Method	Antigen Affinity Purified
Isotype	IgG
Clonality	Polyclonal
Alias	Gamma-soluble NSF attachment protein (SNAP-gamma) (N-ethylmaleimide-sensitive factor attachment protein gamma), NAPG, SNAPG
Immunogen Species	Homo sapiens (Human)
Research Area	Others
Target Names	NAPG

Image



Western blot

All lanes: NAPG antibody at 1.1µg/ml

Lane 1: HepG2 whole cell lysate

Lane 2: Hela whole cell lysate

Lane 3: U251 whole cell lysate

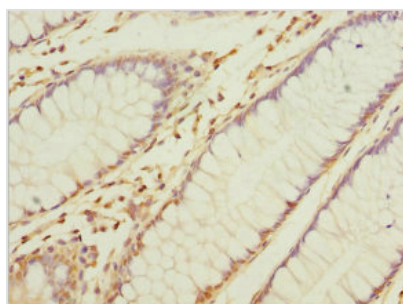
Lane 4: K562 whole cell lysate

Secondary

Goat polyclonal to rabbit IgG at 1/10000 dilution

Predicted band size: 35, 26 kDa

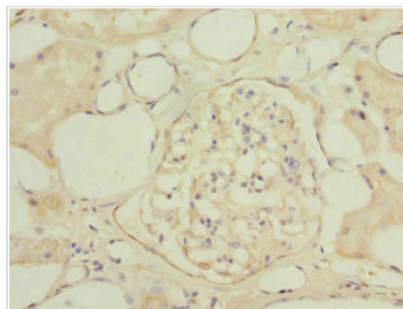
Observed band size: 35 kDa



Immunohistochemistry of paraffin-embedded

human colon cancer using CSB-

PA860352DSR1HU at dilution of 1:100



Immunohistochemistry of paraffin-embedded human kidney tissue using CSB-PA860352DSR1HU at dilution of 1:100