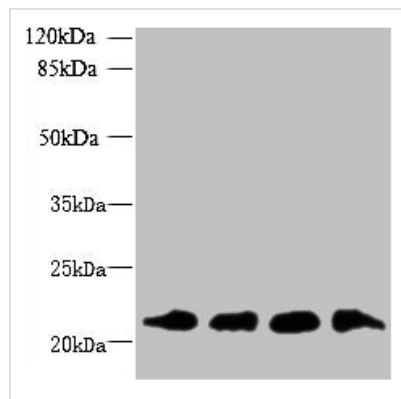




# MRPL18 Antibody

<b>Product Code</b>	CSB-PA861987LA01HU
<b>Storage</b>	Upon receipt, store at -20°C or -80°C. Avoid repeated freeze.
<b>Uniprot No.</b>	Q9H0U6
<b>Immunogen</b>	Recombinant Human 39S ribosomal protein L18, mitochondrial protein (14-180AA)
<b>Raised In</b>	Rabbit
<b>Species Reactivity</b>	Human
<b>Tested Applications</b>	ELISA, WB, IHC; Recommended dilution: WB:1:500-1:2000, IHC:1:20-1:200
<b>Form</b>	Liquid
<b>Conjugate</b>	Non-conjugated
<b>Storage Buffer</b>	Preservative: 0.03% Proclin 300 Constituents: 50% Glycerol, 0.01M PBS, PH 7.4
<b>Purification Method</b>	>95%, Protein G purified
<b>Isotype</b>	IgG
<b>Clonality</b>	Polyclonal
<b>Alias</b>	39S ribosomal protein L18, mitochondrial (L18mt) (MRP-L18) (Mitochondrial large ribosomal subunit protein uL18m), MRPL18
<b>Immunogen Species</b>	Homo sapiens (Human)
<b>Research Area</b>	Tags & Cell Markers
<b>Target Names</b>	MRPL18

## Image



### Western blot

All lanes: MRPL18 antibody at 8µg/ml

Lane 1: U251 whole cell lysate

Lane 2: THP-1 whole cell lysate

Lane 3: PC-3 whole cell lysate

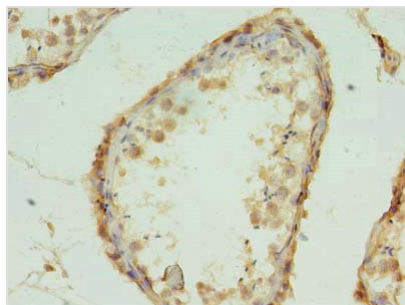
Lane 4: U87 whole cell lysate

Secondary

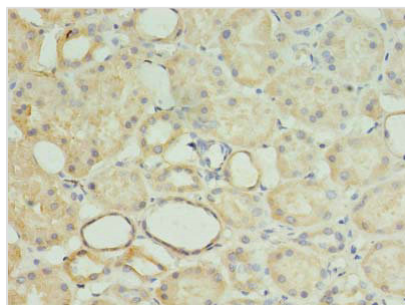
Goat polyclonal to rabbit IgG at 1/10000 dilution

Predicted band size: 21 kDa

Observed band size: 21 kDa



Immunohistochemistry of paraffin-embedded human testis tissue using CSB-PA861987LA01HU at dilution of 1:100



Immunohistochemistry of paraffin-embedded human kidney tissue using CSB-PA861987LA01HU at dilution of 1:100