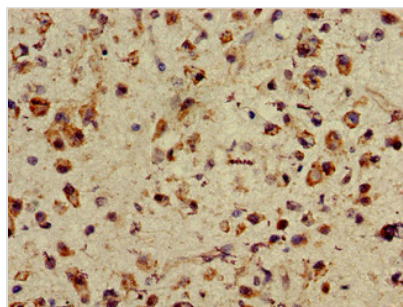




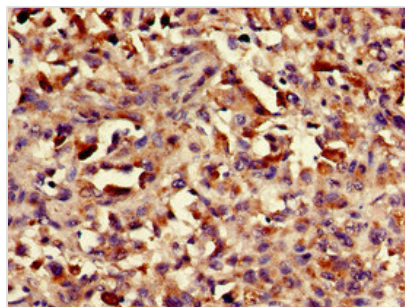
ASH1L Antibody

Product Code	CSB-PA865114LA01HU
Storage	Upon receipt, store at -20°C or -80°C. Avoid repeated freeze.
Uniprot No.	Q9NR48
Immunogen	Recombinant Human Histone-lysine N-methyltransferase ASH1L protein (1906-2160AA)
Raised In	Rabbit
Species Reactivity	Human
Tested Applications	ELISA, IHC, IF; Recommended dilution: IHC:1:20-1:200, IF:1:50-1:200
Form	Liquid
Conjugate	Non-conjugated
Storage Buffer	Preservative: 0.03% Proclin 300 Constituents: 50% Glycerol, 0.01M PBS, pH 7.4
Purification Method	>95%, Protein G purified
Isotype	IgG
Clonality	Polyclonal
Alias	Histone-lysine N-methyltransferase ASH1L (EC 2.1.1.43) (ASH1-like protein) (huASH1) (Absent small and homeotic disks protein 1 homolog) (Lysine N-methyltransferase 2H), ASH1L, KIAA1420 KMT2H
Immunogen Species	Homo sapiens (Human)
Research Area	Neuroscience
Target Names	ASH1L

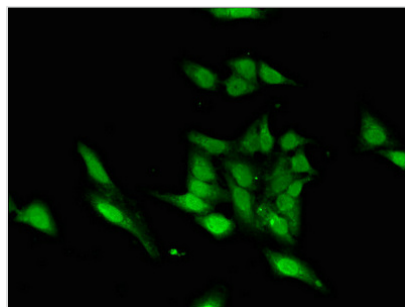
Image



Immunohistochemistry of paraffin-embedded human glioma using CSB-PA865114LA01HU at dilution of 1:100



Immunohistochemistry of paraffin-embedded human melanoma using CSB-PA865114LA01HU at dilution of 1:100



Immunofluorescent analysis of HeLa cells using CSB-PA865114LA01HU at dilution of 1:100 and Alexa Fluor 488-conjugated AffiniPure Goat Anti-Rabbit IgG(H+L)