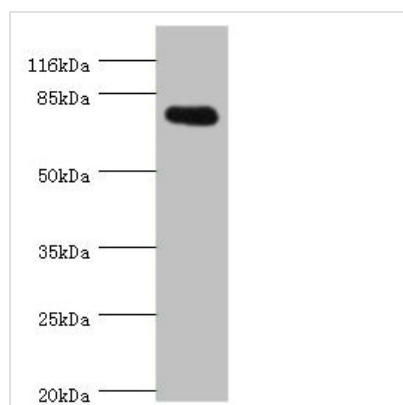




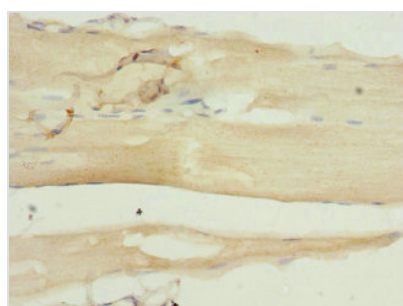
SH2B1 Antibody

Product Code	CSB-PA868300DSR1HU
Storage	Upon receipt, store at -20°C or -80°C. Avoid repeated freeze.
Uniprot No.	Q9NRF2
Immunogen	Recombinant Human SH2B adapter protein 1 protein (360-520AA)
Raised In	Rabbit
Species Reactivity	Human
Tested Applications	ELISA, WB, IHC; Recommended dilution: WB:1:1000-1:5000, IHC:1:20-1:200
Form	Liquid
Conjugate	Non-conjugated
Storage Buffer	PBS with 0.02% sodium azide, 50% glycerol, pH7.3.
Purification Method	Antigen Affinity Purified
Isotype	IgG
Clonality	Polyclonal
Alias	SH2B adapter protein 1 (Pro-rich, PH and SH2 domain-containing signaling mediator) (PSM) (SH2 domain-containing protein 1B), SH2B1, KIAA1299 SH2B
Immunogen Species	Homo sapiens (Human)
Research Area	Signal Transduction
Target Names	SH2B1

Image



Western blot
All lanes: SH2B1 antibody at 0.81µg/ml + 293T whole cell lysate
Secondary
Goat polyclonal to rabbit IgG at 1/10000 dilution
Predicted band size: 80, 71, 73 kDa
Observed band size: 80 kDa



Immunohistochemistry of paraffin-embedded human skeletal muscle tissue using CSB-PA868300DSR1HU at dilution of 1:100

