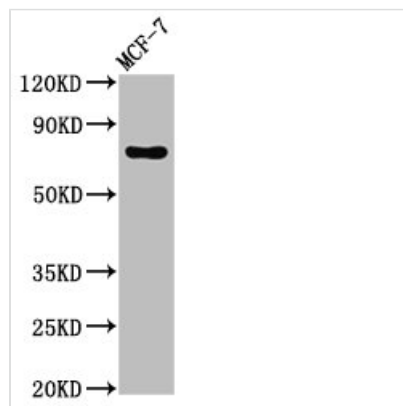




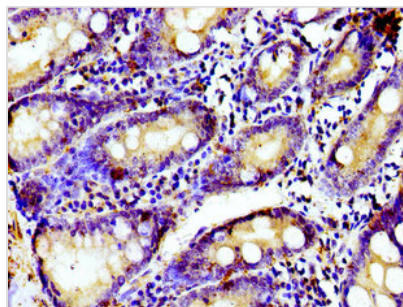
TUBGCP4 Antibody

Product Code	CSB-PA871402LA01HU
Storage	Upon receipt, store at -20°C or -80°C. Avoid repeated freeze.
Uniprot No.	Q9UGJ1
Immunogen	Recombinant Human Gamma-tubulin complex component 4 protein (203-309AA)
Raised In	Rabbit
Species Reactivity	Human
Tested Applications	ELISA, WB, IHC, IF, IP; Recommended dilution: WB:1:500-1:5000, IHC:1:20-1:200, IF:1:200-1:500, IP:1:200-1:2000
Form	Liquid
Conjugate	Non-conjugated
Storage Buffer	Preservative: 0.03% Proclin 300 Constituents: 50% Glycerol, 0.01M PBS, pH 7.4
Purification Method	>95%, Protein G purified
Isotype	IgG
Clonality	Polyclonal
Alias	Gamma-tubulin complex component 4 (GCP-4) (hGCP4) (Gamma-ring complex protein 76 kDa) (h76p) (hGrip76), TUBGCP4, 76P GCP4
Immunogen Species	Homo sapiens (Human)
Research Area	Others
Target Names	TUBGCP4

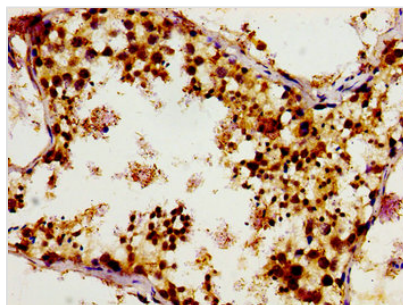
Image



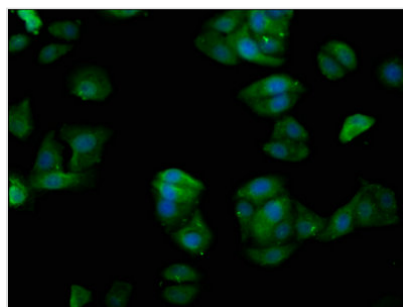
Western Blot
Positive WB detected in: MCF-7 whole cell lysate
All lanes: TUBGCP4 antibody at 3μg/ml
Secondary
Goat polyclonal to rabbit IgG at 1/50000 dilution
Predicted band size: 77 kDa
Observed band size: 77 kDa



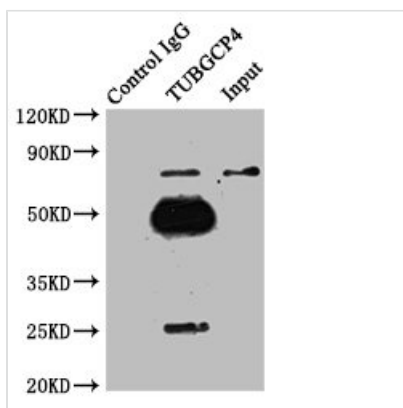
Immunohistochemistry of paraffin-embedded human small intestine tissue using CSB-PA871402LA01HU at dilution of 1:100



Immunohistochemistry of paraffin-embedded human testis tissue using CSB-PA871402LA01HU at dilution of 1:100



Immunofluorescence staining of HepG2 cells with CSB-PA871402LA01HU at 1:200, counter-stained with DAPI. The cells were fixed in 4% formaldehyde, permeabilized using 0.2% Triton X-100 and blocked in 10% normal Goat Serum. The cells were then incubated with the antibody overnight at 4°C. The secondary antibody was Alexa Fluor 488-conjugated AffiniPure Goat Anti-Rabbit IgG(H+L).



Immunoprecipitating TUBGCP4 in MCF-7 whole cell lysate

Lane 1: Rabbit control IgG instead of CSB-PA871402LA01HU in MCF-7 whole cell lysate.

For western blotting, a HRP-conjugated Protein G antibody was used as the secondary antibody (1/2000)

Lane 2: CSB-PA871402LA01HU (8μg) + MCF-7 whole cell lysate (500μg)

Lane 3: MCF-7 whole cell lysate (10μg)