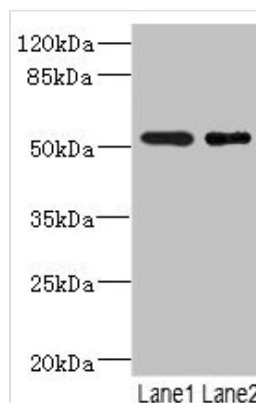




# RXFP3 Antibody

<b>Product Code</b>	CSB-PA873646DSR1HU
<b>Storage</b>	Upon receipt, store at -20°C or -80°C. Avoid repeated freeze.
<b>Uniprot No.</b>	Q9NSD7
<b>Immunogen</b>	Recombinant Human Relaxin-3 receptor 1 protein (1-80AA)
<b>Raised In</b>	Rabbit
<b>Species Reactivity</b>	Human
<b>Tested Applications</b>	ELISA, WB, IHC; Recommended dilution: WB:1:1000-1:5000, IHC:1:20-1:200
<b>Form</b>	Liquid
<b>Conjugate</b>	Non-conjugated
<b>Storage Buffer</b>	PBS with 0.02% sodium azide, 50% glycerol, pH7.3.
<b>Purification Method</b>	Antigen Affinity Purified
<b>Isotype</b>	IgG
<b>Clonality</b>	Polyclonal
<b>Alias</b>	Relaxin-3 receptor 1 (RLN3 receptor 1) (G protein-coupled receptor SALPR) (G-protein coupled receptor GPCR135) (Relaxin family peptide receptor 3) (Somatostatin- and angiotensin-like peptide receptor), RXFP3, RLN3R1 SALPR
<b>Immunogen Species</b>	Homo sapiens (Human)
<b>Research Area</b>	Neuroscience
<b>Target Names</b>	RXFP3

## Image



### Western blot

All lanes: RXFP3 antibody at 3.68μg/ml

Lane 1: Jurkat whole cell lysate

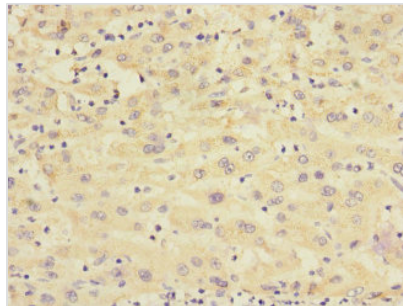
Lane 2: HepG2 whole cell lysate

Secondary

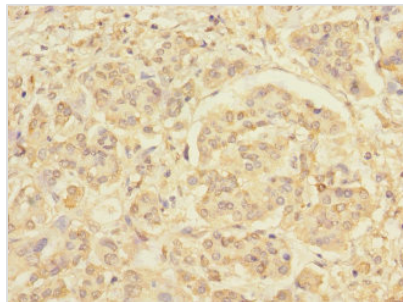
Goat polyclonal to rabbit IgG at 1/10000 dilution

Predicted band size: 51 kDa

Observed band size: 51 kDa



Immunohistochemistry of paraffin-embedded human liver cancer using CSB-PA873646DSR1HU at dilution of 1:100



Immunohistochemistry of paraffin-embedded human pancreatic cancer using CSB-PA873646DSR1HU at dilution of 1:100