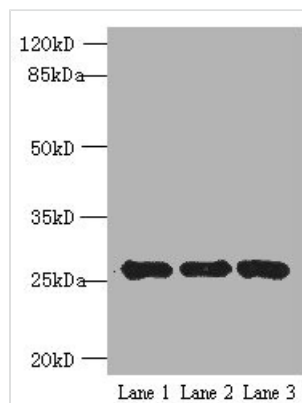




EXOSC5 Antibody

Product Code	CSB-PA878857LA01HU
Storage	Upon receipt, store at -20°C or -80°C. Avoid repeated freeze.
Uniprot No.	Q9NQT4
Immunogen	Recombinant Human Exosome complex component RRP46 protein (1-235AA)
Raised In	Rabbit
Species Reactivity	Human
Tested Applications	ELISA, WB, IHC; Recommended dilution: WB:1:500-1:2000, IHC:1:20-1:200
Form	Liquid
Conjugate	Non-conjugated
Storage Buffer	Preservative: 0.03% Proclin 300 Constituents: 50% Glycerol, 0.01M PBS, PH 7.4
Purification Method	>95%, Protein G purified
Isotype	IgG
Clonality	Polyclonal
Alias	Exosome complex component RRP46 (Chronic myelogenous leukemia tumor antigen 28) (Exosome component 5) (Ribosomal RNA-processing protein 46) (p12B), EXOSC5, CML28 RRP46
Immunogen Species	Homo sapiens (Human)
Research Area	Epigenetics and Nuclear Signaling
Target Names	EXOSC5

Image



Western blot

All lanes: EXOSC5 antibody at 5μg/ml

Lane 1: K562 whole cell lysate

Lane 2: 293T whole cell lysate

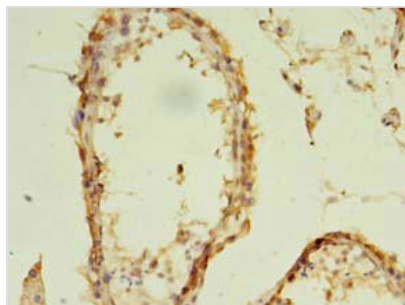
Lane 3: Hela whole cell lysate

Secondary

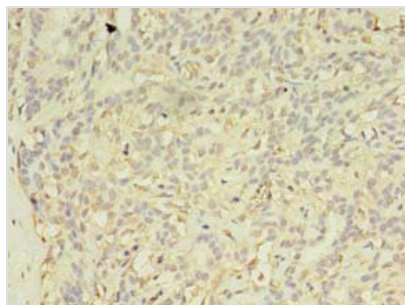
Goat polyclonal to rabbit IgG at 1/10000 dilution

Predicted band size: 25 kDa

Observed band size: 25 kDa



Immunohistochemistry of paraffin-embedded human testis tissue using CSB-PA878857LA01HU at dilution of 1:100



Immunohistochemistry of paraffin-embedded human breast cancer using CSB-PA878857LA01HU at dilution of 1:100