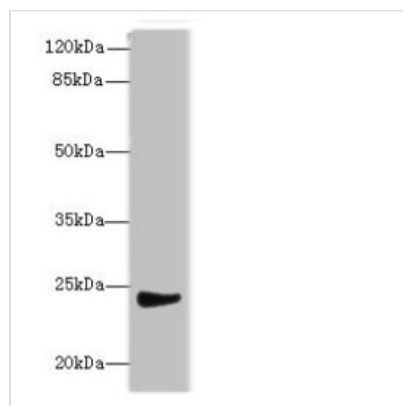




MRPL22 Antibody

Product Code	CSB-PA878907LA01HU
Storage	Upon receipt, store at -20°C or -80°C. Avoid repeated freeze.
Uniprot No.	Q9NWU5
Immunogen	Recombinant Human 39S ribosomal protein L22, mitochondrial protein (41-206AA)
Raised In	Rabbit
Species Reactivity	Human
Tested Applications	ELISA, WB, IHC; Recommended dilution: WB:1:500-1:2000, IHC:1:20-1:200
Form	Liquid
Conjugate	Non-conjugated
Storage Buffer	Preservative: 0.03% Proclin 300 Constituents: 50% Glycerol, 0.01M PBS, PH 7.4
Purification Method	>95%, Protein G purified
Isotype	IgG
Clonality	Polyclonal
Alias	39S ribosomal protein L22, mitochondrial (L22mt) (MRP-L22) (39S ribosomal protein L25, mitochondrial) (L25mt) (MRP-L25) (Mitochondrial large ribosomal subunit protein uL22m), MRPL22, MRPL25 RPML25
Immunogen Species	Homo sapiens (Human)
Research Area	Tags & Cell Markers
Target Names	MRPL22

Image



Western blot

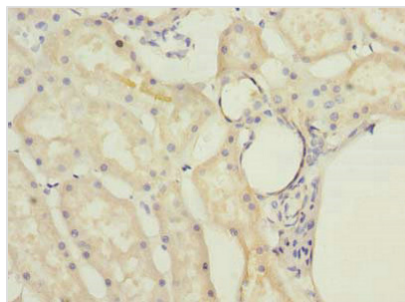
All lanes: MRPL22 antibody at 12μg/ml + SH-SY5Y whole cell lysate

Secondary

Goat polyclonal to rabbit IgG at 1/10000 dilution

Predicted band size: 24, 14, 15 kDa

Observed band size: 24 kDa



Immunohistochemistry of paraffin-embedded human kidney tissue using CSB-PA878907LA01HU at dilution of 1:100